



KG International

MOVING THE WORLD

MOVING TO
THE NEXT
50 YEARS
1968-2018



KG BEARINGS
PRODUCT RANGE



RELIABLE | SUSTAINABLE | PERFORMANCE



KG





MOVING TO
THE NEXT
50 YEARS
1968-2018

KG INTERNATIONAL HEAD OFFICE AND MAIN DISTRIBUTION CENTRE, JEBEL ALI FREE ZONE, DUBAI, UAE



We at KGI are fully committed to offering a comprehensive range of bearings and power transmission products in major quality segments, so that our valued customers can achieve better productivity, more profits and higher level of competitiveness in their market.

We accomplish this by continuously striving to achieve a higher level of professionalism internally, enhanced service & support and by continuously improving our business processes.

KGI is also committed to supporting the communities within which we operate. We believe in the practice of social responsibility and encourage similar behaviour in our employees and external providers. We support the conservation of the physical environment and the prevention of wastage & pollution at our facilities. We proactively comply with all applicable safety, environmental, legal and regulatory requirements to which we subscribe.



Kedar Gupta

Founder & Chairman,
KG Group



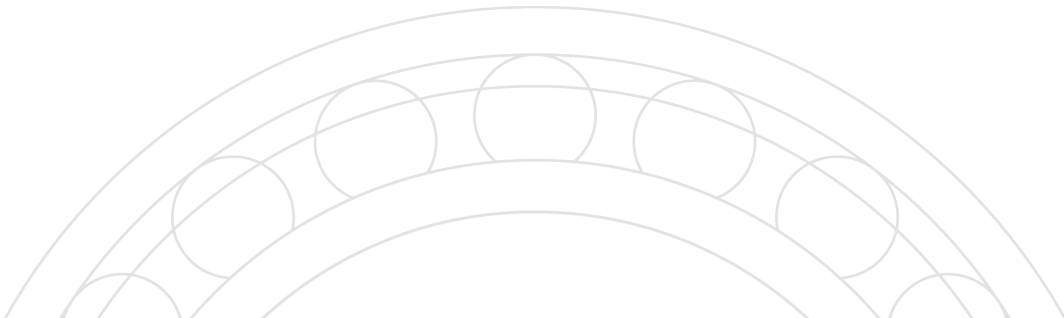
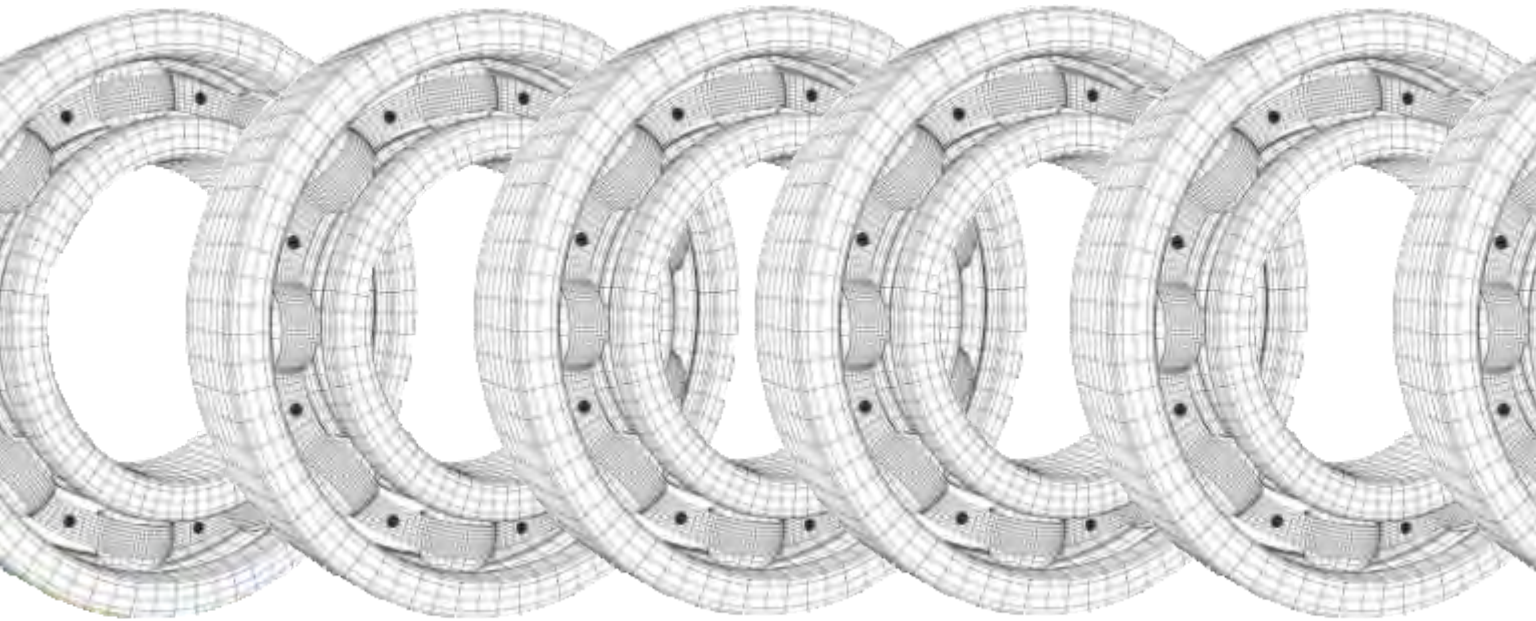
Rohit Gupta

CEO,
KG Group

A torch-bearer in
the industry, taking
the company to new
heights.

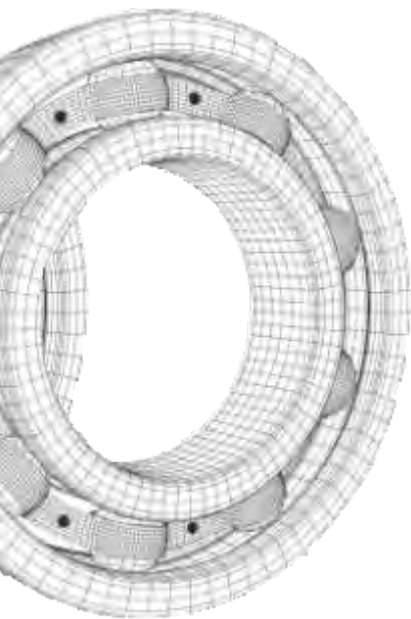


YOUR ENGINEERING SOLUTION PROVIDER FOR





ALL INDUSTRIAL & AUTOMOTIVE APPLICATIONS



BEARING PORTFOLIO

PAGE NO.

| | |
|--|----|
| Deep Groove Ball Bearings | 01 |
| Miniature & Extra Small Bearings | 03 |
| Angular Contact Ball Bearings | 04 |
| Self-Aligning Ball Bearings | 05 |
| Cylindrical Roller Bearings | 06 |
| Tapered Roller Bearings | 09 |
| Spherical Roller Bearings & Spherical Plain Bearings | 15 |
| Needle Bearings & Cage Assemblies | 18 |
| Thrust Ball Bearings | 19 |
| Ball Bearing Units | 20 |
| Plummer Block Housings | 26 |
| Adapter Sleeve | 27 |
| Automotive Bearings | 29 |
| Rod End Bearings | 34 |
| UV Joints | 34 |
| Linear Motion Bearings | 34 |
| Special Bearings | 35 |
| Slewing Bearing & Drives | 36 |



KG[®] Deep Groove Ball Bearings



| | | | | | |
|---------|-------|------|-------|-------|-------|
| 1160304 | 16038 | 4209 | 6006 | 6201 | 62211 |
| 1160305 | 1604 | 4210 | 6007 | 6202 | 62212 |
| 16002 | 16040 | 4211 | 6008 | 6203 | 62214 |
| 16003 | 16044 | 4212 | 6009 | 6204 | 6222 |
| 16004 | 1605 | 4213 | 6010 | 6205 | 6224 |
| 16005 | 1607 | 4214 | 6011 | 6206 | 6226 |
| 16006 | 16100 | 4215 | 6012 | 6207 | 6228 |
| 16007 | 1614 | 4216 | 6013 | 6208 | 6230 |
| 16008 | 1615 | 4217 | 6014 | 6209 | 62300 |
| 16009 | 1616 | 4218 | 6015 | 6210 | 62301 |
| 16010 | 1620 | 4220 | 6016 | 6211 | 62302 |
| 16011 | 1623 | 4301 | 6017 | 6212 | 62303 |
| 16012 | 1628 | 4302 | 6018 | 6213 | 62304 |
| 16013 | 1630 | 4303 | 6019 | 6214 | 62305 |
| 16014 | 1635 | 4304 | 6020 | 6215 | 62306 |
| 16015 | 1638 | 4305 | 6021 | 6216 | 62307 |
| 16016 | 1641 | 4306 | 6022 | 6217 | 62308 |
| 16017 | 1652 | 4307 | 6024 | 6218 | 62309 |
| 16018 | 1657 | 4308 | 6026 | 6219 | 62310 |
| 16019 | 1658 | 4309 | 6028 | 6220 | 62311 |
| 16020 | 40204 | 4310 | 6030 | 62200 | 62312 |
| 16021 | 40205 | 4311 | 6032 | 62201 | 62314 |
| 16022 | 40206 | 4312 | 6034 | 62202 | 6232 |
| 16024 | 4200 | 4313 | 6036 | 62203 | 60/32 |
| 16026 | 4201 | 4314 | 6038 | 62204 | 62/22 |
| 1658 | 4202 | 4315 | 6040 | 62205 | 62/28 |
| 16028 | 4203 | 6000 | 6044 | 62206 | |
| 1603 | 4204 | 6001 | 6048 | 62207 | |
| 16030 | 4205 | 6002 | 6052 | 62208 | |
| 16032 | 4206 | 6003 | 6200 | 62209 | |
| 16034 | 4207 | 6004 | 62000 | 6221 | |
| 16036 | 4208 | 6005 | 62001 | 62210 | |

KG[®] Deep Groove Ball Bearings



| | | | | | | |
|-------|------|------|------|-------|-------|-------|
| 62/32 | 6315 | 6418 | 6840 | 6921 | RLS15 | RMS18 |
| 63/22 | 6316 | 6800 | 6844 | 6922 | RLS16 | RMS22 |
| 63/32 | 6317 | 6801 | 6848 | 6924 | RLS18 | RMS24 |
| 6234 | 6318 | 6802 | 6852 | 6926 | RLS20 | RMS26 |
| 6236 | 6319 | 6803 | 6856 | 6928 | RLS22 | RMS27 |
| 6238 | 6320 | 6804 | 6860 | 6930 | RLS24 | RMS28 |
| 6240 | 6321 | 6805 | 6864 | 6932 | RLS26 | RMS30 |
| 6300 | 6322 | 6806 | 6868 | 6936 | RLS28 | RMS32 |
| 63001 | 6324 | 6807 | 6872 | 6938 | RLS30 | RMS34 |
| 63002 | 6326 | 6808 | 6876 | 6940 | RLS32 | RMS36 |
| 63003 | 6328 | 6809 | 6880 | 6944 | RLS34 | RMS38 |
| 63004 | 6330 | 6810 | 6900 | 6948 | RLS36 | RMS4 |
| 63005 | 6332 | 6811 | 6901 | 6952 | RLS38 | RMS40 |
| 63006 | 6334 | 6812 | 6902 | 6956 | RLS4 | RMS44 |
| 63007 | 6336 | 6813 | 6903 | 6960 | RLS40 | RMS48 |
| 63008 | 6338 | 6814 | 6904 | 6964 | RLS44 | RMS5 |
| 63009 | 6340 | 6815 | 6905 | 6968 | RLS48 | RMS6 |
| 6301 | 6403 | 6816 | 6906 | 6972 | RLS5 | RMS7 |
| 63010 | 6404 | 6817 | 6907 | 6976 | RLS52 | RMS8 |
| 6302 | 6405 | 6818 | 6908 | 6980 | RLS56 | RMS9 |
| 6303 | 6406 | 6819 | 6909 | EE2 | RLS6 | |
| 6304 | 6407 | 6820 | 6910 | EE3 | RLS60 | |
| 6305 | 6408 | 6821 | 6911 | EE4 | RLS7 | |
| 6306 | 6409 | 6822 | 6912 | EE5 | RLS8 | |
| 6307 | 6410 | 6824 | 6913 | EE6 | RLS9 | |
| 6308 | 6411 | 6826 | 6914 | EE7 | RMS10 | |
| 6309 | 6412 | 6828 | 6915 | EE8 | RMS11 | |
| 6310 | 6413 | 6830 | 6916 | RLS10 | RMS12 | |
| 6311 | 6414 | 6832 | 6917 | RLS11 | RMS13 | |
| 6312 | 6415 | 6834 | 6918 | RLS12 | RMS14 | |
| 6313 | 6416 | 6836 | 6919 | RLS13 | RMS15 | |
| 6314 | 6417 | 6838 | 6920 | RLS14 | RMS16 | |

Note:
 KG can also offer
 RS, 2RS, Z, ZZ,
 NR, ZNR
 designations & C2,
 CN, C3, C4 radial
 clearance.
 Bearings in
 stainless steel also
 available

KG[®] Miniature and Extra Small Ball Bearings

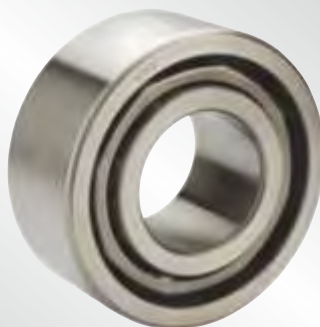


| | | | |
|--------|--------|-------|-------|
| 015M04 | 634 | F5M08 | F7M11 |
| 015M05 | 635 | F5M09 | F7M13 |
| 015M06 | 636 | F5M10 | F8M12 |
| 025M08 | 637 | F602 | F8M14 |
| 2M05 | 638 | F603 | R133 |
| 2M06 | 639 | F604 | R1-4 |
| 2M07 | 682 | F605 | R144 |
| 3M06 | 683 | F606 | R1-5 |
| 3M08 | 684 | F607 | R155 |
| 3M09 | 685 | F608 | R156 |
| 4M07 | 686 | F623 | R166 |
| 4M08 | 687 | F624 | R168 |
| 4M10 | 688 | F625 | R1810 |
| 5M08 | 689 | F626 | R188 |
| 5M09 | 692 | F682 | R2 |
| 5M10 | 693 | F683 | R2A |
| 602 | 694 | F684 | R3 |
| 603 | 695 | F685 | R4 |
| 604 | 696 | F686 | R4A |
| 605 | 697 | F687 | R6 |
| 606 | 698 | F688 | R8 |
| 607 | 699 | F689 | |
| 608 | 6M10 | F692 | |
| 609 | 6M12 | F693 | |
| 623 | 7M11 | F694 | |
| 624 | 7M13 | F695 | |
| 625 | 8M12 | F696 | |
| 626 | 8M14 | F697 | |
| 627 | 99502H | F698 | |
| 628 | F4M07 | F699 | |
| 629 | F4M08 | F6M10 | |
| 633 | F4M10 | F6M12 | |

Note:

KG can also offer RS, 2RS, Z, ZZ, NR, ZNR designations & C2, CN, C3, C4 radial clearance. Bearings in stainless steel also available.

KG[®] Angular Contact Ball Bearings



| | | | | | | | |
|------|------|------|------|------|-------|-------|-------|
| 3200 | 3311 | 5304 | 7019 | 7304 | 7914 | QJ206 | QJ316 |
| 3201 | 3312 | 5305 | 7020 | 7305 | 7915 | QJ207 | QJ317 |
| 3202 | 3313 | 5306 | 7022 | 7306 | 7916 | QJ208 | QJ318 |
| 3203 | 3314 | 5307 | 7200 | 7307 | 7917 | QJ209 | QJ319 |
| 3204 | 3315 | 5308 | 7201 | 7308 | 7918 | QJ210 | QJ320 |
| 3205 | 3316 | 5309 | 7202 | 7309 | 7919 | QJ211 | QJ322 |
| 3206 | 3317 | 5310 | 7203 | 7310 | 7920 | QJ212 | QJ324 |
| 3207 | 3318 | 5311 | 7204 | 7311 | 7921 | QJ213 | QJ326 |
| 3208 | 3319 | 5312 | 7205 | 7312 | 7922 | QJ214 | QJ328 |
| 3209 | 3320 | 5313 | 7206 | 7313 | 7924 | QJ215 | QJ330 |
| 3210 | 5200 | 5314 | 7207 | 7314 | 7926 | QJ216 | |
| 3211 | 5201 | 5315 | 7208 | 7315 | 7928 | QJ217 | |
| 3212 | 5202 | 5316 | 7209 | 7316 | 7930 | QJ218 | |
| 3213 | 5203 | 7000 | 7210 | 7317 | E10 | QJ219 | |
| 3214 | 5204 | 7001 | 7211 | 7318 | E11 | QJ220 | |
| 3215 | 5205 | 7002 | 7212 | 7319 | E12 | QJ222 | |
| 3216 | 5206 | 7003 | 7213 | 7320 | E13 | QJ224 | |
| 3217 | 5207 | 7004 | 7214 | 7321 | E15 | QJ226 | |
| 3218 | 5208 | 7005 | 7215 | 7322 | E18 | QJ228 | |
| 3219 | 5209 | 7006 | 7216 | 7324 | E19 | QJ230 | |
| 3220 | 5210 | 7007 | 7217 | 7326 | E20 | QJ303 | |
| 3300 | 5211 | 7008 | 7218 | 7328 | E4 | QJ304 | |
| 3301 | 5212 | 7009 | 7219 | 7330 | E5 | QJ306 | |
| 3302 | 5213 | 7010 | 7220 | 7905 | E6 | QJ307 | |
| 3303 | 5214 | 7011 | 7222 | 7906 | E7 | QJ308 | |
| 3304 | 5215 | 7012 | 7223 | 7907 | E8 | QJ309 | |
| 3305 | 5216 | 7013 | 7224 | 7908 | E9 | QJ310 | |
| 3306 | 5217 | 7014 | 7226 | 7909 | L17 | QJ311 | |
| 3307 | 5218 | 7015 | 7228 | 7910 | L20 | QJ312 | |
| 3308 | 5219 | 7016 | 7230 | 7911 | LJ2 | QJ313 | |
| 3309 | 5220 | 7017 | 7302 | 7912 | QJ203 | QJ314 | |
| 3310 | 5303 | 7018 | 7303 | 7913 | QJ205 | QJ315 | |

Note:
 KG can also offer
 3200, 3300, 5200
 & 5300 series
 with ZZ & 2RS
 designations.
 7000, 7200 &
 7300 series with
 (P5 & P4)
 precision class &
 QJ series

KG[®] Self-Aligning Ball Bearings

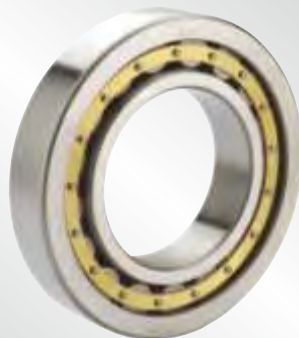


| | | |
|------|------|------|
| 108 | 1307 | 2216 |
| 1200 | 1308 | 2217 |
| 1201 | 1309 | 2218 |
| 1202 | 1310 | 2219 |
| 1203 | 1311 | 2220 |
| 1204 | 1312 | 2300 |
| 1205 | 1313 | 2301 |
| 1206 | 1314 | 2302 |
| 1207 | 1315 | 2303 |
| 1208 | 1316 | 2304 |
| 1209 | 1317 | 2305 |
| 1210 | 1318 | 2306 |
| 1211 | 1319 | 2307 |
| 1212 | 1320 | 2308 |
| 1213 | 1321 | 2309 |
| 1214 | 1322 | 2310 |
| 1215 | 2200 | 2311 |
| 1216 | 2201 | 2312 |
| 1217 | 2202 | 2313 |
| 1218 | 2203 | 2314 |
| 1219 | 2204 | 2315 |
| 1220 | 2205 | 2316 |
| 1221 | 2206 | 2317 |
| 1222 | 2207 | 2318 |
| 1224 | 2208 | 2319 |
| 1300 | 2209 | 2320 |
| 1301 | 2210 | |
| 1302 | 2211 | |
| 1303 | 2212 | |
| 1304 | 2213 | |
| 1305 | 2214 | |
| 1306 | 2215 | |

Note:

KG can also offer 2200 & 2300 series with 2RS designation, Cylindrical & Tapered Bore type & C2, CN & C3 radial clearance. KG also offers Tapered Bore Self-Aligning Ball Bearings with adaptersleeves as a set.

KG[®] Cylindrical Roller Bearings



| | | | | | | | |
|-------|-------|-------|-------|-------|--------|--------|-------|
| N1011 | N228 | N405 | NF214 | NF324 | NJ210 | NJ2226 | NJ238 |
| N1026 | N230 | N406 | NF215 | NF326 | NJ211 | NJ2228 | NJ240 |
| N204 | N2312 | N407 | NF216 | NF328 | NJ212 | NJ2230 | NJ304 |
| N205 | N2313 | N408 | NF217 | NF330 | NJ213 | NJ224 | NJ305 |
| N206 | N232 | N409 | NF218 | NF405 | NJ214 | NJ226 | NJ306 |
| N207 | N2322 | N410 | NF219 | NF406 | NJ215 | NJ228 | NJ307 |
| N208 | N2324 | N411 | NF220 | NF407 | NJ216 | NJ230 | NJ308 |
| N209 | N234 | N412 | NF221 | NF408 | NJ217 | NJ2304 | NJ309 |
| N210 | N240 | N413 | NF222 | NF409 | NJ218 | NJ2305 | NJ310 |
| N211 | N304 | N414 | NF224 | NF410 | NJ219 | NJ2306 | NJ311 |
| N212 | N305 | N415 | NF226 | NF411 | NJ220 | NJ2307 | NJ312 |
| N213 | N306 | N416 | NF228 | NF412 | NJ2204 | NJ2308 | NJ313 |
| N214 | N307 | N417 | NF230 | NF413 | NJ2205 | NJ2309 | NJ314 |
| N215 | N308 | N418 | NF304 | NF414 | NJ2206 | NJ2310 | NJ315 |
| N216 | N309 | N419 | NF305 | NF415 | NJ2207 | NJ2311 | NJ316 |
| N217 | N310 | N420 | NF306 | NF416 | NJ2208 | NJ2312 | NJ317 |
| N218 | N311 | N421 | NF307 | NF417 | NJ2209 | NJ2313 | NJ318 |
| N219 | N312 | N422 | NF308 | NF418 | NJ221 | NJ2314 | NJ319 |
| N220 | N313 | N424 | NF309 | NF419 | NJ2210 | NJ2315 | NJ320 |
| N2205 | N314 | N426 | NF310 | NF420 | NJ2211 | NJ2316 | NJ321 |
| N2206 | N315 | N428 | NF311 | NF421 | NJ2212 | NJ2317 | NJ322 |
| N2207 | N316 | N430 | NF312 | NF422 | NJ2213 | NJ2318 | NJ324 |
| N2208 | N317 | NF204 | NF313 | NF424 | NJ2214 | NJ2319 | NJ326 |
| N2209 | N318 | NF205 | NF314 | NF426 | NJ2215 | NJ232 | NJ328 |
| N221 | N319 | NF206 | NF315 | NF428 | NJ2216 | NJ2320 | NJ330 |
| N2210 | N320 | NF207 | NF316 | NF430 | NJ2217 | NJ2322 | NJ405 |
| N2211 | N321 | NF208 | NF317 | NJ204 | NJ2218 | NJ2324 | NJ406 |
| N2212 | N322 | NF209 | NF318 | NJ205 | NJ2219 | NJ2326 | NJ407 |
| N2214 | N324 | NF210 | NF319 | NJ206 | NJ222 | NJ2328 | NJ408 |
| N222 | N326 | NF211 | NF320 | NJ207 | NJ2220 | NJ2330 | NJ409 |
| N224 | N328 | NF212 | NF321 | NJ208 | NJ2222 | NJ234 | NJ410 |
| N226 | N330 | NF213 | NF322 | NJ209 | NJ2224 | NJ236 | NJ411 |

KG[®] Cylindrical Roller Bearings



| | | | | | | |
|--------|--------|--------|--------|--------|---------|---------|
| NJ412 | NU1024 | NU2212 | NU2316 | NU324 | NUB209 | NUP2216 |
| NJ413 | NU1026 | NU2213 | NU2317 | NU326 | NUB210 | NUP2218 |
| NJ414 | NU1028 | NU2214 | NU2318 | NU328 | NUB211 | NUP2222 |
| NJ415 | NU1030 | NU2215 | NU2319 | NU330 | NUB212 | NUP2224 |
| NJ416 | NU1034 | NU2216 | NU232 | NU332 | NUP203 | NUP226 |
| NJ417 | NU1044 | NU2217 | NU2320 | NU336 | NUP204 | NUP228 |
| NJ418 | NU203 | NU2218 | NU2322 | NU405 | NUP205 | NUP230 |
| NJ419 | NU204 | NU2219 | NU2324 | NU406 | NUP206 | NUP2305 |
| NJ420 | NU205 | NU222 | NU2326 | NU407 | NUP207 | NUP2306 |
| NJ421 | NU206 | NU2220 | NU2328 | NU408 | NUP208 | NUP2307 |
| NJ422 | NU207 | NU2222 | NU2330 | NU409 | NUP209 | NUP2308 |
| NJ424 | NU208 | NU2224 | NU234 | NU410 | NUP210 | NUP2309 |
| NJ426 | NU209 | NU2226 | NU236 | NU411 | NUP211 | NUP2310 |
| NJ428 | NU210 | NU2228 | NU238 | NU412 | NUP212 | NUP2311 |
| NJ430 | NU211 | NU2230 | NU304 | NU413 | NUP213 | NUP2312 |
| NU1005 | NU212 | NU224 | NU305 | NU414 | NUP214 | NUP304 |
| NU1006 | NU213 | NU2244 | NU306 | NU415 | NUP215 | NUP305 |
| NU1007 | NU214 | NU226 | NU307 | NU416 | NUP216 | NUP2309 |
| NU1008 | NU215 | NU2264 | NU308 | NU417 | NUP217 | NUP2310 |
| NU1009 | NU216 | NU228 | NU309 | NU418 | NUP218 | NUP2311 |
| NU1010 | NU217 | NU230 | NU310 | NU419 | NUP219 | NUP2312 |
| NU1011 | NU218 | NU2304 | NU311 | NU420 | NUP220 | NUP304 |
| NU1012 | NU219 | NU2305 | NU312 | NU421 | NUP2205 | NUP305 |
| NU1013 | NU220 | NU2306 | NU313 | NU422 | NUP2206 | NUP306 |
| NU1014 | NU2204 | NU2307 | NU314 | NU424 | NUP2207 | NUP307 |
| NU1015 | NU2205 | NU2308 | NU315 | NU426 | NUP2208 | NUP308 |
| NU1016 | NU2206 | NU2309 | NU316 | NU428 | NUP2209 | NUP309 |
| NU1017 | NU2207 | NU2310 | NU317 | NU430 | NUP221 | NUP310 |
| NU1018 | NU2208 | NU2311 | NU318 | NUB204 | NUP2210 | NUP311 |
| NU1019 | NU2209 | NU2312 | NU319 | NUB205 | NUP2211 | NUP312 |
| NU1020 | NU221 | NU2313 | NU320 | NUB206 | NUP2212 | NUP313 |
| NU1021 | NU2210 | NU2314 | NU321 | NUB207 | NUP2213 | NUP314 |
| NU1022 | NU2211 | NU2315 | NU322 | NUB208 | NUP2214 | NUP315 |

KG[®] Cylindrical Roller Bearings



| | |
|--------|----------------|
| NUP316 | NUP430 |
| NUP317 | NUTR15 |
| NUP318 | NUTR17 |
| NUP319 | NUTR20 |
| NUP320 | NUTR25 |
| NUP321 | NUTR30 |
| NUP322 | NUTR35 |
| NUP324 | NUTR40 |
| NUP326 | NUTR45 |
| NUP328 | NUTR50 |
| NUP330 | NN3016MKW33P5 |
| NUP405 | NN3017MKW33P5 |
| NUP406 | NN3018MKW33P5 |
| NUP407 | NN3019MKW33P5 |
| NUP408 | NN3020MKW33P5 |
| NUP409 | NN3021MKW33P5 |
| NUP410 | NN3022MKW33P5 |
| NUP411 | NN3023MKW33P5 |
| NUP412 | NN3024MKW33P5 |
| NUP413 | NN3025MKW33P5 |
| NUP414 | NN3026MKW33P5 |
| NUP415 | NN3027MKW33P5 |
| NUP416 | NN3028MKW33P5 |
| NUP417 | NN3029MKW33P5 |
| NUP418 | NN3030MKW33P5 |
| NUP419 | NUPK2205S1NRC3 |
| NUP420 | |
| NUP421 | |
| NUP422 | |
| NUP424 | |
| NUP426 | |
| NUP428 | |

Note:

KG can also offer this series with higher load capacity 'E-type' steel cage design and machined brass cage.

KG[®] Taper Roller Bearings - Metric Series



| | | | | | | | |
|-------|---------|--------|----------|--------|-------|-------|--------|
| 30202 | 30302 | 30319 | 32026 | 32221 | 32318 | 33012 | 33206 |
| 30203 | 30303 | 30319D | 32028 | 32222 | 32319 | 33013 | 33207 |
| 30204 | 30304 | 30320 | 32030 | 32224 | 32320 | 33014 | 33208 |
| 30205 | 30305 | 30320D | 32032 | 32226 | 32321 | 33015 | 33209 |
| 30206 | 30305D | 30321 | 32034 | 32228 | 32322 | 33016 | 33210 |
| 30207 | 30306 | 30321D | 32036 | 32230 | 32324 | 33017 | 33211 |
| 30208 | 30306D | 30322 | 32038 | 32232 | 32326 | 33018 | 33212 |
| 30209 | 30307 | 30322D | 32040 | 32234 | 32328 | 33019 | 33213 |
| 30210 | 30307D | 30324 | 32044 | 32236 | 32330 | 33020 | 33214 |
| 30211 | 30308 | 30326 | 32048 | 32238 | 32332 | 33021 | 33215 |
| 30212 | 30308D | 30328 | 32052 | 32240 | 32334 | 33022 | 33216 |
| 30213 | 30308RA | 30330 | 32056 | 32244 | 32336 | 33024 | 33217 |
| 30214 | 30309 | 32004 | 32060 | 32248 | 32338 | 33026 | 33218 |
| 30215 | 30309D | 32005 | 32203 | 32252 | 32340 | 33028 | 33219 |
| 30216 | 30310 | 32006 | 32204 | 32256 | 32922 | 33030 | 33220 |
| 30217 | 30310D | 32007 | 32205 | 32260 | 32924 | 33108 | 320/28 |
| 30218 | 30311 | 32008 | 32206 | 32303 | 32926 | 33109 | 320/32 |
| 30219 | 30311D | 32009 | 32207 | 32304 | 32928 | 33110 | |
| 30220 | 30312 | 32010 | 32208 | 32305 | 32930 | 33111 | |
| 30221 | 30312D | 32011 | 32209 | 32306 | 32932 | 33112 | |
| 30222 | 30313 | 32012 | 32210 | 32306C | 32934 | 33113 | |
| 30224 | 30313D | 32013 | 32211 | 32307 | 32936 | 33114 | |
| 30226 | 30314 | 32014 | 32212 | 32308 | 32938 | 33115 | |
| 30228 | 30314D | 32015 | 32213 | 32309 | 32944 | 33116 | |
| 30230 | 30315 | 32016 | 32213UX1 | 32310 | 32976 | 33117 | |
| 30232 | 30315D | 32017 | 32214 | 32311 | 33005 | 33118 | |
| 30234 | 30316 | 32018 | 32215 | 32312 | 33006 | 33119 | |
| 30236 | 30316D | 32019 | 32216 | 32313 | 33007 | 33120 | |
| 30238 | 30317 | 32020 | 32217 | 32314 | 33008 | 33121 | |
| 30240 | 30317D | 32021 | 32218 | 32315 | 33009 | 33122 | |
| 30244 | 30318 | 32022 | 32219 | 32316 | 33010 | 33124 | |
| 30252 | 30318D | 32024 | 32220 | 32317 | 33011 | 33205 | |

KG[®] Taper Roller Bearings - Inch Series



| | | | | |
|----------------|---------------|--------------|----------------|----------------|
| 02474/02420 | 104948/104910 | 14136A/276 | 17119/17244 | 221430/221410 |
| 02475/02420 | 104949/104911 | 14137A/14276 | 1755/1729 | 221431/221410 |
| 02476/02420 | 104949/104912 | 14138A/14276 | 17580/17520 | 221440/221410 |
| 02872/02820 | 11162/11300 | 14139/14276 | 1775/1729 | 221449/221410 |
| 02875/02820 | 11162/11315 | 14585/25 | 1779/1729 | 221449A/221410 |
| 02877/02820 | 11590/11520 | 15100/15245 | 1780/1729 | 224334/224310 |
| 02878/02820 | 11749/11710 | 15101/15243 | 18590/18520 | 224335/224310 |
| 03062/03162 | 11949/11910 | 15101/15244 | 18685/18620 | 224346/224310 |
| 05062/05185 | 12175/12303 | 15101/15245 | 18690/18620 | 22780/22720 |
| 05066/05185 | 12580/12520 | 15101/15250 | 18790/18720 | 228349/228310 |
| 05075/05185 | 12648/12610 | 15101/15250X | 18790/18724 | 23100/23256 |
| 05079/05185 | 12649/10 | 15102/15245 | 19150/19281 | 231648/231610 |
| 07079/07196 | 12649/12610 | 15103/15245 | 19150/19283 | 231649/231610 |
| 07087/07196 | 12749/10 | 15106/15245 | 1985/1930 | 237545/10 |
| 07093/07196 | 12749/12711 | 15112/15245 | 1985/1931 | 2474/2420 |
| 07096/07196 | 1280/20 | 15113/15245 | 1985/1932 | 24780/21 |
| 07097/07196 | 13685/13621 | 15116/15245 | 1988/22 | 24780/24720 |
| 07098/07196 | 13687/13620 | 15117/15245 | 205149/205110 | 25572/25520 |
| 07100/07196 | 13687/13621 | 15118/15245 | 205149A/205110 | 25577/25520 |
| 07100/07204 | 1380/1328 | 15119/15245 | 207049/207010 | 25578/25520 |
| 07100S/07196 | 1380/1329 | 15120/15245 | 207049A/207010 | 2558/2523 |
| 09062/09195 | 13889/13830 | 15123/15245 | 21075/21212 | 25580/21 |
| 09067/09194 | 14116/14274 | 15125/15245 | 211749/211710 | 25580/25520 |
| 09067/09195 | 14116/14276 | 15126/15245 | 212044/212011 | 25581/25520 |
| 09067/09196 | 14116/14283 | 15578/15523 | 212046/212011 | 25582/25520 |
| 09074/09195 | 14117A/14276 | 15580/15523 | 212047/212011 | 25584/25520 |
| 09078/09195 | 14118/14283 | 15590/15520 | 212049/212010 | 25590/25519 |
| 09081/09195 | 14124/14276 | 15590/15523 | 212049/212011 | 25590/25520 |
| 10079/710 | 14125A/14276 | 16137/16284 | 217810/217849 | 25590/25521 |
| 102949/102910 | 14125A/276 | 16150/16282 | 218248/218210 | 25590/25522 |
| 104945/910 | 14130/14276 | 16150/16284 | 212047/10 | 25590/25523 |
| 104947A/104911 | 14131/14276 | 17118/17244 | 220149/10 | 25590/25526 |

KG[®] Taper Roller Bearings - Inch Series



| | | | | | |
|--------------|-------------|---------------|--------------|-------------|-------------|
| 25592/25520 | 2776/2720 | 28995/28920 | 33275/33472 | 3549A/3510 | 37425/37625 |
| 2578/2523 | 2777/2720 | 29580/29520 | 33281/33462 | 355/354A | 37431/37625 |
| 2580/2520 | 2780/2720 | 29582/29520 | 33281/33472 | 355A/354A | 3767/3720 |
| 2580/2523 | 2785/2720 | 29585/29520 | 33287/33462 | 355X/352 | 3775/3720 |
| 2580/2523S | 2788/2720 | 29585/29521 | 33287/33472 | 3576/3525 | 3776/3720 |
| 2582/02523 | 27880/27820 | 29585/29522 | 336/332 | 3577/3525 | 3777/3720 |
| 2585/2523 | 27881/27820 | 29586/29520 | 3379/3320 | 3578/3520 | 3778/3720 |
| 25877/258202 | 2788A/2720 | 29590/29520 | 3382/3320 | 3578/3525 | 3779/3720 |
| 5877/25821 | 2789/2720 | 29675/29620 | 3382/3321 | 3578/3526 | 3780/20 |
| 25878/25821 | 2790/2720 | 29675/29630 | 3382/3331 | 3579/3525 | 3780/3720 |
| 25880/25821 | 2793/2720 | 29685/29620 | 3382/3339 | 358/354A | 3780/3726 |
| 2682/2631 | 2793/2729 | 29688/29620 | 3384/20 | 3580/3525 | 3780/3730 |
| 2687/2631 | 2793/2735X | 29748/29710 | 3386/3320 | 3585/3525 | 3780/3732 |
| 26878/26822 | 2794/2720 | 29749/29710 | 33885/33821 | 3586/3525 | 3781/3720 |
| 2688/2631 | 2796/2720 | 29749/29711 | 33889/33821 | 359A/354A | 3782/3720 |
| 26880/26822 | 28150/28300 | 2984/2924 | 33890/33821 | 359S/352 | 3784/3720 |
| 26881/26822 | 28150/28315 | 300849/300811 | 33891/33821 | 359S/354A | 385/382A |
| 26882/26820 | 28158/28300 | 307749/307710 | 33895/33821 | 359S/354X3 | 385A/382A |
| 26882/26822 | 28579/28520 | 31593/31520 | 33895/33822 | 365/362A | 385X/382A |
| 26882/26822A | 28579/28521 | 31594/31520 | 339/332 | 366/362A | 386A/382A |
| 26882/26823 | 28580/20 | 31594/31521 | 342/332 | 36690/36620 | 387/382 |
| 26882/26824 | 28580/28521 | 31597/31520 | 34274/34478 | 36691/36620 | 387/382A |
| 26883/26822 | 28584/28521 | 318448/318410 | 34274/34492A | 367/362A | 3872/3820 |
| 26884/26822 | 28678/28622 | 3187/3120 | 34306/34478 | 368/362A | 3875/3820 |
| 26885/26822 | 28680/28622 | 3188/3120 | 34307/34478 | 368A/362 | 3876/3820 |
| 26886/26822 | 28682/28622 | 319249/319210 | 344/332 | 368A/362A | 3877/20 |
| 2689/2631 | 2878/2820 | 3193/3120 | 344A/332 | 368A/363 | 387A/382 |
| 2690/2631 | 2879/2820 | 3196/3120 | 3476/3420 | 368S/362A | 387A/382A |
| 27687/27620 | 28985/28919 | 323/42AR | 3478/3420 | 36990/36920 | 387A/382S |
| 27689/27620 | 28985/28920 | 327249/327210 | 3479/3420 | 369A/362A | 387A/383A |
| 27690/27620 | 28985/28921 | 33225/33462 | 3490/3420 | 369S/392A | 387AS/382A |
| 27691/27620 | 28990/28920 | 33275/33462 | 350A/354A | 370A/362A | 387S/382A |



KG[®] Taper Roller Bearings - Inch Series



| | | | | |
|--------------|---------------|--------------|---------------|----------------|
| 3880/3820 | 399AS/394A | 44640/44610 | 47686/47620A | 503349A/503310 |
| 388A/382A | 4050/4138 | 44643/44610 | 47687/47620 | 506348/506310 |
| 389/382A | 4059/4138 | 44649/44610 | 477/472 | 506349/506310 |
| 389A/382A | 41125/41286 | 45280/45220 | 47890/47820 | 506849/506810 |
| 389A/383A | 41126/41286 | 45282/45220 | 47896/47820 | 508748/508710 |
| 390/394A | 414242/414210 | 45284/45220 | 480/472 | 511946/511910 |
| 390A/394A | 414245/414210 | 45285/45220 | 482/472 | 515649/515610 |
| 390A/394AS | 414245X/10 | 45285A/45220 | 482/472A | 516442/516410 |
| 392/3920 | 414249/414210 | 45287/45220 | 48286/48220 | 516448/516410 |
| 392/394A | 415647/415610 | 45289/45220 | 48290/48220 | 516449/516410 |
| 395/394A | 418/414 | 45290/45220 | 483/472 | 516849/516810 |
| 39573/39520 | 420/414 | 45291/45220 | 48385/48320 | 518445/10 |
| 39575/39520 | 42346/42584 | 45449/45410 | 48393/48320 | 522546/522510 |
| 39580/39520 | 42350/42584 | 455/453X | 484/472 | 522548/522510 |
| 39580/28 | 42368/42584 | 455S/453X | 48548/48510 | 522549/522510 |
| 39581/39520 | 42375/42584 | 460/453X | 48548A/48510 | 522649/522610 |
| 39585/39520 | 42381/42584 | 46162/46368 | 48684/48620 | 52375/52618 |
| 39585A/39520 | 42687/42620 | 46175/46368 | 48685/48620 | 52387/52618 |
| 39590/39520 | 42688/42620 | 46176/46368 | 495/493 | 52393/52618 |
| 395A/394A | 42690/42620 | 462/453X | 49585/49520 | 52400/52618 |
| 395S/394A | 4300/344783 | 463/453X | 495A/493 | 52400/52638 |
| 396/394A | 4301/34478 | 467/453X | 495AS/493 | 527/522 |
| 397/394A | 43131/43312 | 469/453A | 495AX/493 | 528/522 |
| 3975/3920 | 432349/432310 | 469/453X | 496/493 | 529/522 |
| 3979/3920 | 436/432 | 469/454 | 497/492A | 529X/522 |
| 3980/3920 | 438/432 | 47487/47420 | 497/493 | 53162/53375 |
| 3982/3920 | 438/432A | 47490/47420 | 497A/493 | 53176/53375 |
| 3982X/3927SX | 4388/4335 | 47678/47620 | 498/492A | 53176/53377 |
| 3984/3920 | 4395/4335 | 47679/47620 | 498/493 | 53177/53375 |
| 3984/3925 | 44143/44348 | 47680/47620 | 501349/501310 | 53178/53375 |
| 3994/3920 | 44150/44348 | 47681/47620 | 501349/501314 | 534149/534110 |
| 399A/394A | 44158/44348 | 47686/47620 | 503349/10 | 535/532A |

KG[®] Taper Roller Bearings - Inch Series



| | | | | |
|---------------|---------------|---------------|---------------|---------------|
| 537/532X | 575S/572 | 6389/6320 | 67390/67322 | 72201C/72487 |
| 539/532A | 576/572 | 639/632 | 67391/67322 | 72212/487 |
| 539/532X | 5760/5735 | 639249/639210 | 67790/67720 | 72212C/72487 |
| 5395/5335 | 577/572 | 641/632 | 681/672 | 72218C/72487 |
| 539A/532X | 580/572 | 641/633 | 68145/11 | 72225C/72487 |
| 540049/540010 | 581/572 | 643/632 | 68149/10 | 724348/724314 |
| 543/532X | 582/572 | 644/632 | 68149/11Z | 72849/72810 |
| 55175C/55437 | 59200/59412 | 64433/64700 | 68149/68111 | 736149/736110 |
| 55176C/55437 | 593/592A | 64450/64700 | 681A/672 | 738249/738210 |
| 55187/437 | 593A/592A | 64450/64708 | 683/672 | 740/742 |
| 55187C/55437 | 594/592A | 6460/6420 | 68450/68712 | 744/742 |
| 55200C/55437 | 594A/592A | 6461/6420 | 68462/68712 | 74500/74850 |
| 55200C/55443 | 594A/592XE | 6461A/6420 | 685/672 | 74525/74850 |
| 555/552A | 594A/592XS | 65237/65500 | 687/672 | 74550/74845 |
| 555S/552A | 595/592A | 65390/65320 | 69349/69310 | 74550/74850 |
| 5578/5535 | 596/592A | 655/653 | 704649/704610 | 745A/742 |
| 557S/552A | 598/592A | 6559C/6535 | 710949/710910 | 748/743 |
| 5583/5535 | 598A/592A | 6576/6535 | 714149/714110 | 748S/742 |
| 5584/5535 | 603049/603011 | 6580/6535 | 714249/714210 | 749/742 |
| 559/552A | 603049/603012 | 659/653 | 71453/71750 | 749A/742 |
| 560/552A | 603049/603014 | 661/653 | 71455/71750 | 749S/742 |
| 560S/552A | 6075/6157 | 66200/66462 | 715334/715311 | 756A/752 |
| 56425/56650 | 610549/610510 | 66225/66462 | 715343/715311 | 757/752 |
| 56425/56662 | 612949/612910 | 663/652 | 715345/715311 | 758/752 |
| 565/563 | 617049/617010 | 663/653 | 715348/715311 | 759/752 |
| 566/563 | 619/612 | 665/653 | 716648/716610 | 760/752 |
| 567/563 | 621/612 | 66584/66520 | 716649/716610 | 766/752 |
| 567A/563 | 623/612 | 66589/66520 | 718149/718110 | 780/772 |
| 568/563 | 6277/6220 | 665A/653 | 719149/719113 | 782/772 |
| 57410/29710 | 630349/630310 | 67048/10 | 720249/720210 | 78214C/78551 |
| 57414/300C | 6379/6320 | 67048/67010 | 72188C/72487 | 78215C/78551 |
| 575/572 | 6386/6320 | 67388/67322 | 72200C/72487 | 78225/78551 |

KG[®] Taper Roller Bearings - Inch Series



| | | | |
|----------------|----------------|----------------|------|
| 78250/78551 | 813840/813810 | 89449/89410 | 7707 |
| 78349/78310A | 813841/813810 | 89449/89411 | 7718 |
| 78349A/78310A | 813841A/813810 | 896/892 | 7804 |
| 78349C/78310 | 813842/813810 | 898/892 | 7805 |
| 786/772 | 813844/813810 | 898A/892 | 7806 |
| 787/772 | 814749/814710 | 903245/903210 | 7807 |
| 799/792 | 814849/814810 | 903249/10 | 7808 |
| 799A/792 | 822049/822010 | 903249/903210 | 7809 |
| 801346/801310 | 835/832 | 903249A/903210 | 7813 |
| 801346-22/10-2 | 842/832 | 903345/903310 | 7815 |
| 801349/801310 | 84249/84210 | 90354/90748 | |
| 802048/802011 | 84548/84510 | 90381/90744 | |
| 803145/803110 | 850/832 | 907643/907614 | |
| 803146/803110 | 861/854 | 911242/911210 | |
| 803149/11 | 86643/86610 | 911244/911211 | |
| 803149/12 | 86647/86610 | 911245/911210 | |
| 803149/803110 | 86649/86610 | 911245/911216 | |
| 804048/804010 | 88046/10 | 913840/913810 | |
| 804049/804010 | 88048/88010 | 913842/913810 | |
| 804840/804810 | 88540/88513 | 913848/913811 | |
| 804842/804810 | 88542/88510 | 917840/917810 | |
| 804846/804810 | 88542/88511 | 924045/924010 | |
| 804848/804810 | 88542/88512 | 926740/926710 | |
| 804849/804810 | 88547/88510 | 926747/926710 | |
| 806649/806610 | 88648/88610 | 936/932 | |
| 807040/807010 | 88648/88611AS | 938/932 | |
| 807044/807010 | 88649/88610 | 941/932 | |
| 807045/807012 | 89249/89210 | 95475/95925 | |
| 807046/807010 | 89440/89410 | 95525/95925 | |
| 807048/807010 | 89443/89410 | 95528/95925 | |
| 807049/807010 | 89444/89410 | 97500/97900 | |
| 812148/812111 | 89446/89410 | 99575/99100 | |
| 81349/813010 | 89448/89410 | 99600/100 | |

KG[®] Spherical Roller Bearings



| | | | | | | | | |
|-------|-------|-------|-------|-------|---------|---------|---------|---------|
| 21304 | 22219 | 22322 | 23064 | 23196 | 23948 | 24122 | 230/850 | 239/670 |
| 21305 | 22220 | 22324 | 23068 | 23218 | 23952 | 24124 | 230/900 | 239/710 |
| 21306 | 22222 | 22326 | 23072 | 23220 | 23956 | 24126 | 230/950 | 239/750 |
| 21307 | 22224 | 22328 | 23076 | 23222 | 23960 | 24128 | 231/500 | 239/800 |
| 21308 | 22226 | 22330 | 23080 | 23224 | 23964 | 24130 | 231/530 | 239/850 |
| 21309 | 22228 | 22332 | 23084 | 23226 | 23968 | 24132 | 231/560 | 239/900 |
| 21310 | 22230 | 22334 | 23088 | 23228 | 23972 | 24134 | 231/600 | 239/950 |
| 21311 | 22232 | 22336 | 23092 | 23230 | 23976 | 24136 | 231/630 | 240/500 |
| 21312 | 22234 | 22338 | 23096 | 23232 | 23980 | 24138 | 231/670 | 240/530 |
| 21313 | 22236 | 22340 | 23120 | 23234 | 240/500 | 24140 | 231/710 | 240/560 |
| 21314 | 22238 | 22344 | 23122 | 23236 | 24024 | 24144 | 231/750 | 240/600 |
| 21315 | 22240 | 22348 | 23124 | 23238 | 24026 | 24148 | 231/800 | 240/630 |
| 21316 | 22244 | 22352 | 23126 | 23240 | 24028 | 24152 | 231/850 | 240/670 |
| 21317 | 22248 | 22356 | 23128 | 23244 | 24030 | 24156 | 232/500 | 240/710 |
| 21318 | 22252 | 22372 | 23130 | 23248 | 24032 | 24160 | 232/530 | 240/750 |
| 21319 | 22256 | 22376 | 23132 | 23252 | 24034 | 24164 | 232/560 | 240/800 |
| 21320 | 22260 | 22380 | 23134 | 23256 | 24036 | 24168 | 232/600 | 240/850 |
| 21322 | 22264 | 23020 | 23136 | 23260 | 24038 | 24172 | 232/670 | 240/900 |
| 21324 | 22272 | 23022 | 23138 | 23264 | 24040 | 24176 | 232/710 | 240/950 |
| 22205 | 22280 | 23024 | 23140 | 23268 | 24044 | 24180 | 232/750 | |
| 22206 | 22308 | 23026 | 23144 | 23272 | 24048 | 24184 | 239/500 | |
| 22207 | 22309 | 23028 | 23148 | 23276 | 24052 | 24188 | 239/530 | |
| 22208 | 22310 | 23030 | 23152 | 23280 | 24056 | 24192 | 239/560 | |
| 22209 | 22311 | 23032 | 23156 | 23284 | 24060 | 24196 | 239/600 | |
| 22210 | 22312 | 23034 | 23160 | 23926 | 24064 | 230/500 | 239/630 | |
| 22211 | 22313 | 23036 | 23164 | 23928 | 24068 | 230/530 | | |
| 22212 | 22314 | 23038 | 23168 | 23930 | 24072 | 230/560 | | |
| 22213 | 22315 | 23040 | 23172 | 23932 | 24076 | 230/600 | | |
| 22214 | 22316 | 23044 | 23176 | 23934 | 24080 | 230/630 | | |
| 22215 | 22317 | 23048 | 23180 | 23936 | 24084 | 230/670 | | |
| 22216 | 22318 | 23052 | 23184 | 23938 | 24088 | 230/710 | | |
| 22217 | 22319 | 23056 | 23188 | 23940 | 24092 | 230/750 | | |
| 22218 | 22320 | 23060 | 23192 | 23944 | 24096 | 230/800 | | |

Note:
 KG can also offer C2, CN, C3 & C4 radial clearance with pressed steel and machined brass cage. Bearings are available with or without oil groove (W33) & with cylindrical or tapered bore.

KG[®] Spherical Plain Bearings



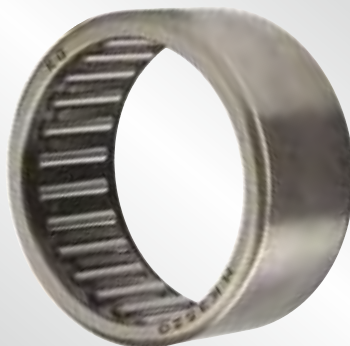
| | | |
|-------------|---------------|--------------|
| GE10E | GE45ES-2RS | GEEW30ES-2RS |
| GE100ES | GE5E | GEEW32ES |
| GE100ES-2RS | GE50ES | GEEW32ES-2RS |
| GE110ES | GE50ES-2RS | GEEW35ES |
| GE110ES-2RS | GE55ES | GEEW35ES-2RS |
| GE12E | GE6E | GEEW40ES |
| GE120ES | GE60ES | GEEW40ES-2RS |
| GE120ES-2RS | GE60ES-2RS | GEEW45ES |
| GE140ES | GE70ES | GEEW45ES-2RS |
| GE140ES-2RS | GE70ES-2RS | GEEW50ES |
| GE15ES | GE8E | GEEW50ES-2RS |
| GE15ES-2RS | GE80ES | GEEW60ES |
| GE160ES | GE80ES-2RS | GEEW60ES-2RS |
| GE160ES-2RS | GE90ES | GEEW63ES |
| GE17ES | GE90ES-2RS | GEEW63ES-2RS |
| GE17ES-2RS | GEEW100ES | GEEW70ES |
| GE180ES | GEEW100ES-2RS | GEEW70ES-2RS |
| GE180ES-2RS | GEEW12ES | GEEW80ES |
| GE20ES | GEEW12ES-2RS | GEEW80ES-2RS |
| GE20ES-2RS | GEEW125ES | GEG10E |
| GE200ES | GEEW125ES-2RS | GEG100ES |
| GE200ES-2RS | GEEW15ES | GEG100ES-2RS |
| GE25ES | GEEW15ES-2RS | GEG100ET-2RS |
| GE25ES-2RS | GEEW16ES | GEG110ES |
| GE30ES | GEEW16ES-2RS | GEG110ES-2RS |
| GE30ES-2RS | GEEW17ES | GEG110ET-2RS |
| GE35ES | GEEW17ES-2RS | GEG12E |
| GE35ES-2RS | GEEW20ES | GEG120ES |
| GE4E | GEEW20ES-2RS | GEG120ES-2RS |
| GE40ES | GEEW25ES | GEG120ET-2RS |
| GE40ES-2RS | GEEW25ES-2RS | GEG140ES |
| GE45ES | GEEW30ES | GEG140ES-2RS |

KG[®] Spherical Plain Bearings



| | | |
|---------------|--------------|-------------|
| GEG140ET-2RS | GEG70ET-2RS | GEZ44ES |
| GEG15ES | GEG8E | GEZ44ES-2RS |
| GEG15ES-2RS | GEG80ES | GEZ50ES |
| GEG160ES | GEG80ES-2RS | GEZ50ES-2RS |
| GEG160ES-2RS | GEG80ET-2RS | GEZ57ES |
| GEG17ES | GEG90ES | GEZ57ES-2RS |
| GEG17ES-2RS | GEG90ES-2RS | GEZ63ES |
| GEG180ES | GEG90ET-2RS | GEZ63ES-2RS |
| GEG20ES | GEZ101ES | GEZ69ES |
| GEG20ES-2RS | GEZ101ES-2RS | GEZ69ES-2RS |
| GEG200ES | GEZ107ES | GEZ76ES |
| GEG200ES-2RS | GEZ107ES-2RS | GEZ76ES-2RS |
| GEG30ET-2RS | GEZ114ES | GEZ82ES |
| GEG35ES | GEZ114ES-2RS | GEZ82ES-2RS |
| GEG35ES-2RS | GEZ12ES | GEZ88ES |
| GEG35ET-2RS | GEZ120ES | GEZ88ES-2RS |
| GEG4E | GEZ120ES-2RS | GEZ95ES |
| GEG40ES | GEZ127ES | GEZ95ES-2RS |
| GEG40ES-2RS | GEZ127ES-2RS | |
| GEG40ET-2RS | GEZ15ES | |
| GEG45ES | GEZ152ES | |
| GEG45ES-2RS | GEZ152ES-2RS | |
| GEG45ET-2RS | GEZ19ES | |
| GEG5E GEG50ES | GEZ22ES | |
| GEG50ES-2RS | GEZ25ES | |
| GEG50ET-2RS | GEZ25ES-2RS | |
| GEG6E | GEZ31ES | |
| GEG60ES | GEZ31ES-2RS | |
| GEG60ES-2RS | GEZ34ES | |
| GEG60ET-2RS | GEZ34ES-2RS | |
| GEG70ES | GEZ38ES | |
| GEG70ES-2RS | GEZ38ES-2RS | |

KG[®] Needle Bearings & Cage Assemblies



| | | | | | |
|------------|---------------|---------------|------------|--------|-----------|
| 10HGM1510 | 16KT2110C | 25 HR 32 20 | 9 HR 13 12 | HK1612 | HK3234 |
| 10HR1410 | 16KT2112C | 25 HR 32 26 | 9 HR 16 12 | HK1616 | HK3512 |
| 10HR1412 | 16KT2212 | 25 KT 30 14 S | H 24 16 | HK1622 | HK3516 |
| 10HR1415 | 16KT2212C | 25 NT 30 20 | H 24 20 | HK1712 | HK3520 |
| 10KV1412.5 | 16KV2019.5 | 25 NT 30 24 | HF0612 | HK1714 | HK4012 |
| 10KV1413 | 16KV2021.5 | 253815 | HF2016 | HK1718 | HK4016 |
| 10KV1414 | 16KV2022.5 | 26-899 | HFL1626 | HK1812 | HK4018 |
| 12HGM1810 | 16NV2122 | 28 HM 36 20 | HK0306 | HK1816 | HK4020 |
| 12HGM2012 | 17HR2312 | 28 HR 35 16 | HK0408 | HK2010 | HK4512 |
| 12HR1610 | 17HR2518RS | 28 HR 35 20 | HK0509 | HK2012 | HK4516 |
| 12HR1812 | 18HR2412 | 28 KT 33 14 S | HK0608 | HK2014 | HK4518 |
| 12KT1710 | 18HR2416 | 28 KT 36 16 S | HK0609 | HK2016 | HK4520 |
| 12KV1515 | 18KT2412 | 28 NT 35 20 | HK0709 | HK2020 | HK5020 |
| 12KV1613 | 18KT2412C | 29 KT 39 16 C | HK0808 | HK2025 | HK5024 |
| 12KV1616 | 18KT2413.5C | 30 HR 37 12 | HK0810 | HK2030 | HK5025 |
| 13HGM1912 | 18NV2217 | 30 HR 37 16 | HK0908 | HK2210 | HK509 |
| 13HR1912 | 2ASAXK2542 | 30 HR 37 20 | HK0910 | HK2212 | HK6012 |
| 14HR2012 | 2ASAXK3047 | 30 HR 3726 | HK0912 | HK2216 | K811 02TN |
| 14HR2016 | 2ASAXK5070 | 30 KT 38 16 C | HK1010 | HK2220 | K12X18X12 |
| 14KV1813 | 2ASAXK80105 | 30 NT 35 20 | HK1012 | HK2512 | K28X35X16 |
| 14KV1816.5 | 2ASAXK85110 | 35 DV 39 34 | HK1015 | HK2516 | NA49002RS |
| 14KV1817.5 | 20 HR 26 12 | 35 HM 43 20 | HK1208 | HK2518 | NA4911 |
| 14KV1820 | 20 HR 26 16 | 35 HR 42 12 | HK1210 | HK2520 | NA6902 |
| 14KV1917.3 | 20 HR 26 20 | 35 HR 42 16 | HK1212 | HK2526 | NA6905 |
| 15HR2112 | 20 KT 26 17 C | 35 HR 42 20 | HK1214 | HK2538 | NA6906 |
| 15HR2116 | 20 NT 28 20 | 40 DV 44 34.6 | HK1312 | HK2816 | NK15/16 |
| 15HR2122 | 22 KT 28 14 C | 40 HR 47 12 | HK1412 | HK2820 | NK16/16 |
| 15KV1920 | 22 KT 28 15 C | 40 HR 47 16 | HK1512 | HK3012 | NK18/20 |
| 160238 | 22 KT 28 16 C | 40 HR 47 20 | HK1512OH | HK3016 | NKI5035 |
| 16HR2212 | 22 KT 29 14 C | 40 HR 52 16 | HK1516 | HK3018 | NKI6035 |
| 16HR2216 | 22 KT 29 15.6 | 40 HR 52 20 | HK1516OH | HK3020 | |
| 16HR2222 | 25 HR 32 12 | 8 HR 12 10 | HK1522 | HK3024 | |
| 16KT2110 | 25 HR 32 16 | 9 HR 13 10 | HK1608 | HK3026 | |

KG[®] Thrust Ball Bearings & Spherical Roller Thrust Bearings



| | | | | | | | | | |
|-------|-------|-------|-------|--------|-------|-------|--------|--------|-------|
| 0-10 | 29284 | 29428 | 51116 | 51211 | 51314 | 52205 | 52406 | 53210 | 53318 |
| 0-11 | 29288 | 29430 | 51117 | 51212 | 51315 | 52206 | 52407 | 53210U | 53320 |
| 0-12 | 29292 | 29432 | 51118 | 51213 | 51316 | 52207 | 52408 | 53211 | 53408 |
| 0-13 | 29296 | 29434 | 51120 | 51214 | 51317 | 52208 | 52409 | 53211U | 53409 |
| 0-14 | 29317 | 29436 | 51122 | 51215 | 51318 | 52209 | 52410 | 53212 | 53410 |
| 0-15 | 29318 | 29438 | 51124 | 51216 | 51320 | 52210 | 52411 | 53212U | 53411 |
| 0-16 | 29320 | 29440 | 51126 | 51217 | 51322 | 52211 | 52412 | 53213 | 53412 |
| 0-17 | 29322 | 29444 | 51128 | 51218 | 51324 | 52212 | 52413 | 53214 | 53413 |
| 0-18 | 29324 | 29448 | 51130 | 51220 | 51326 | 52213 | 52414 | 53215 | 53414 |
| 0-20 | 29326 | 29452 | 51132 | 51222 | 51328 | 52214 | 52415 | 53216 | 53415 |
| 0-24 | 29328 | 29456 | 51134 | 51224 | 51330 | 52215 | 52416 | 53217 | 53416 |
| 0-26 | 29330 | 29460 | 51136 | 51224/ | 51405 | 52216 | 52417 | 53218 | 53417 |
| 0-28 | 29332 | 29464 | 51138 | H43 | 51406 | 52217 | 52418 | 53220 | 53418 |
| 0-6 | 29334 | 29468 | 51140 | 51226 | 51407 | 52218 | 52420 | 53305 | 53420 |
| 0-7 | 29336 | 29472 | 51144 | 51228 | 51408 | 52220 | 52422 | 53306 | |
| 0-8 | 29338 | 29476 | 51148 | 51230 | 51409 | 52305 | 52424 | 53307 | |
| 0-9 | 29340 | 29480 | 51152 | 51232 | 51410 | 52306 | 52426 | 53308 | |
| 29230 | 29344 | 51100 | 51156 | 51234 | 51411 | 52307 | 53202 | 53309 | |
| 29232 | 29348 | 51101 | 51160 | 51240 | 51412 | 52308 | 53207 | 53310 | |
| 29234 | 29352 | 51102 | 51164 | 51244 | 51413 | 52309 | 53207U | 53311 | |
| 29236 | 29356 | 51103 | 51168 | 51248 | 51414 | 52310 | 53208 | 53312 | |
| 29238 | 29360 | 51104 | 51172 | 51252 | 51415 | 52311 | 53208U | 53313 | |
| 29240 | 29412 | 51105 | 51200 | 51256 | 51416 | 52312 | 53209 | 53314 | |
| 29244 | 29413 | 51106 | 51201 | 51260 | 51417 | 52313 | 53209U | 53315 | |
| 29248 | 29414 | 51107 | 51202 | 51305 | 51418 | 52314 | | 53316 | |
| 29252 | 29415 | 51108 | 51203 | 51306 | 51420 | 52315 | | 53317 | |
| 29256 | 29416 | 51109 | 51204 | 51307 | 51422 | 52316 | | | |
| 29260 | 29417 | 51110 | 51205 | 51308 | 51424 | 52317 | | | |
| 29264 | 29418 | 51111 | 51206 | 51309 | 51426 | 52318 | | | |
| 29268 | 29420 | 51112 | 51207 | 51310 | 51428 | 52320 | | | |
| 29272 | 29422 | 51113 | 51208 | 51311 | 51430 | 52322 | | | |
| 29276 | 29424 | 51114 | 51209 | 51312 | 52202 | 52324 | | | |
| 29280 | 29426 | 51115 | 51210 | 51313 | 52204 | 52405 | | | |

Note:
KG can also offer
pressed steel
and machined
brass cage.

KG[®] Ball Bearings Units - Pillow Block (Metric Series)



| | | | | | |
|----------|--------|---------|---------|---------|---------|
| SAPF204 | UCC210 | UCF317 | UCFC215 | UCFL316 | UCP306 |
| SAPF205 | UCC211 | UCF318 | UCFC216 | UCFL317 | UCP307 |
| SAPF206 | UCC212 | UCF319 | UCFC217 | UCFL318 | UCP308 |
| SAPF207 | UCF201 | UCF320 | UCFC218 | UCFL319 | UCP309 |
| SBPF204 | UCF202 | UCFA204 | UCFL201 | UCFL320 | UCP310 |
| SBPF205 | UCF203 | UCFA205 | UCFL202 | UCHA204 | UCP311 |
| SBPF206 | UCF204 | UCFA206 | UCFL203 | UCHA205 | UCP312 |
| SBPF207 | UCF205 | UCFA207 | UCFL204 | UCHA206 | UCP313 |
| SBPF208 | UCF206 | UCFA208 | UCFL205 | UCHA207 | UCP314 |
| SBPFL203 | UCF207 | UCFA209 | UCFL206 | UCHA208 | UCP315 |
| SBPFL204 | UCF208 | UCFA210 | UCFL207 | UCHA209 | UCP316 |
| SBPFL205 | UCF209 | UCFA211 | UCFL208 | UCHA210 | UCP317 |
| SBPFL206 | UCF210 | UCFA212 | UCFL209 | UCHA211 | UCP318 |
| SBPFL207 | UCF211 | UCFA213 | UCFL210 | UCHA212 | UCP319 |
| SBPFL208 | UCF212 | UCFA214 | UCFL211 | UCP201 | UCP320 |
| SBPFT203 | UCF213 | UCFA215 | UCFL212 | UCP202 | UCPA201 |
| SBPFT204 | UCF214 | UCFA216 | UCFL213 | UCP203 | UCPA202 |
| SBPFT205 | UCF215 | UCFA217 | UCFL214 | UCP204 | UCPA203 |
| SBPFT206 | UCF216 | UCFA218 | UCFL215 | UCP205 | UCPA204 |
| SBPFT207 | UCF217 | UCFC201 | UCFL216 | UCP206 | UCPA205 |
| SBPFT208 | UCF218 | UCFC202 | UCFL217 | UCP207 | UCPA206 |
| SBPP203 | UCF305 | UCFC203 | UCFL218 | UCP208 | UCPA207 |
| SBPP204 | UCF306 | UCFC204 | UCFL305 | UCP209 | UCPA208 |
| SBPP205 | UCF307 | UCFC205 | UCFL306 | UCP210 | UCPA209 |
| SBPP206 | UCF308 | UCFC206 | UCFL307 | UCP211 | UCPA210 |
| SBPP207 | UCF309 | UCFC207 | UCFL308 | UCP212 | UCPA211 |
| SBPP208 | UCF310 | UCFC208 | UCFL309 | UCP213 | UCPA212 |
| UCC204 | UCF311 | UCFC209 | UCFL310 | UCP214 | |
| UCC205 | UCF312 | UCFC210 | UCFL311 | UCP215 | |
| UCC206 | UCF313 | UCFC211 | UCFL312 | UCP216 | |
| UCC207 | UCF314 | UCFC212 | UCFL313 | UCP217 | |
| UCC208 | UCF315 | UCFC213 | UCFL314 | UCP218 | |
| UCC209 | UCF316 | UCFC214 | UCFL315 | UCP305 | |

Note:
KG can also offer housings with stainless steel bearings.

KG[®] Ball Bearings Units - Pillow Block (Metric Series)



| | | | |
|---------|--------|---------|-----------|
| UCPA213 | UCT308 | UKF213 | UKT211 |
| UCPA214 | UCT309 | UKF215 | UKT212 |
| UCPA215 | UCT310 | UKF216 | UKT213 |
| UCPA216 | UCT311 | UKFL205 | UKT214 |
| UCPA217 | UCT312 | UKFL206 | UKT215 |
| UCPA218 | UCT313 | UKFL207 | UKT216 |
| UCPH204 | UCT314 | UKFL208 | UKT217 |
| UCPH205 | UCT315 | UKFL209 | UKT218 |
| UCPH206 | UCT316 | UKFL210 | UCF201-8 |
| UCPH207 | UCT317 | UKFL211 | UCF202-9 |
| UCPH208 | UCT318 | UKFL212 | UCF202-10 |
| UCPH209 | UCT319 | UKFL213 | UCF203-11 |
| UCPH210 | UCT320 | UKFL215 | UCF204-12 |
| UCPH211 | UCX214 | UKFL216 | UCF205-14 |
| UCPH212 | UFL002 | UKFL217 | UCF205-15 |
| UCT201 | UFL003 | UKP205 | UCF205-16 |
| UCT202 | UFL004 | UKP206 | |
| UCT203 | UFL005 | UKP207 | |
| UCT204 | UFL006 | UKP208 | |
| UCT205 | UFL007 | UKP209 | |
| UCT206 | UFL008 | UKP210 | |
| UCT207 | UFL009 | UKP211 | |
| UCT211 | UFL010 | UKP212 | |
| UCT212 | UFL011 | UKP213 | |
| UCT213 | UFL012 | UKP215 | |
| UCT214 | UKF205 | UKP216 | |
| UCT215 | UKF206 | UKT204 | |
| UCT216 | UKF207 | UKT205 | |
| UCT217 | UKF208 | UKT206 | |
| UCT218 | UKF209 | UKT207 | |
| UCT305 | UKF210 | UKT208 | |
| UCT306 | UKF211 | UKT209 | |
| UCT307 | UKF212 | UKT210 | |

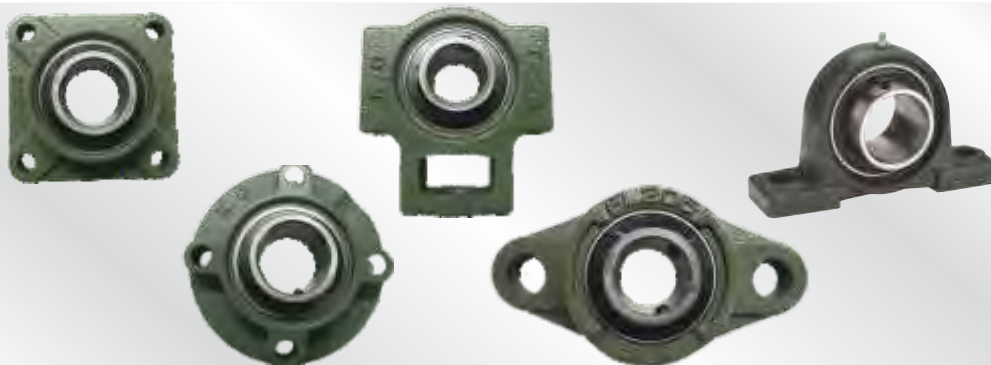
Note:
KG can also offer housings with stainless steel bearings.

KG[®] Ball Bearings Units - Pillow Block (Inch Series)



| | | | | | |
|-----------|------------|------------|------------|------------|-----------|
| UCF206-17 | UCF309-26 | UCFC208-24 | UCFC218-56 | UCFL215-48 | UCP206-18 |
| UCF206-18 | UCF309-28 | UCFC208-25 | UCFL201-8 | UCFL216-50 | UCP206-19 |
| UCF206-19 | UCF310-30 | UCFC209-26 | UCFL202-9 | UCFL305-14 | UCP207-20 |
| UCF207-20 | UCF311-32 | UCFC209-27 | UCFL202-10 | UCFL305-16 | UCP207-21 |
| UCF207-21 | UCF311-34 | UCFC209-28 | UCFL203-11 | UCFL306-18 | UCP207-22 |
| UCF207-22 | UCF312-36 | UCFC210-29 | UCFL204-12 | UCFL307-20 | UCP207-23 |
| UCF207-23 | UCF312-38 | UCFC210-30 | UCFL205-14 | UCFL307-22 | UCP208-24 |
| UCF208-24 | UCF313-40 | UCFC210-31 | UCFL205-15 | UCFL308-24 | UCP208-25 |
| UCF208-25 | UCF314-44 | UCFC210-32 | UCFL205-16 | UCFL309-26 | UCP209-26 |
| UCF209-26 | UCF315-48 | UCFC211-32 | UCFL206-16 | UCFL309-28 | UCP209-27 |
| UCF209-27 | UCF316-50 | UCFC211-33 | UCFL206-17 | UCFL310-30 | UCP209-28 |
| UCF209-28 | UCF317-52 | UCFC211-34 | UCFL206-18 | UCFL311-32 | UCP210-30 |
| UCF210-30 | UCF318-56 | UCFC211-35 | UCFL206-19 | UCFL311-34 | UCP210-31 |
| UCF210-31 | UCF319-60 | UCFC212-36 | UCFL207-20 | UCFL312-36 | UCP211-32 |
| UCF211-32 | UCF320-64 | UCFC212-37 | UCFL207-21 | UCFL312-38 | UCP211-34 |
| UCF211-34 | UCFC201-8 | UCFC212-38 | UCFL207-22 | UCFL313-40 | UCP211-35 |
| UCF211-35 | UCFC202-9 | UCFC212-39 | UCFL207-23 | UCFL314-44 | UCP212-36 |
| UCF212-36 | UCFC202-10 | UCFC213-40 | UCFL208-24 | UCFL315-48 | UCP212-38 |
| UCF212-38 | UCFC203-11 | UCFC213-41 | UCFL208-25 | UCFL316-50 | UCP212-39 |
| UCF212-39 | UCFC204-12 | UCFC214-42 | UCFL209-26 | UCFL317-52 | UCP213-40 |
| UCF213-40 | UCFC205-13 | UCFC214-43 | UCFL209-27 | UCFL318-56 | UCP214-44 |
| UCF214-44 | UCFC205-14 | UCFC214-44 | UCFL209-28 | UCFL319-60 | UCP215-48 |
| UCF215-48 | UCFC205-15 | UCFC215-45 | UCFL210-30 | UCFL320-64 | UCP305-14 |
| UCF216-50 | UCFC205-16 | UCFC215-46 | UCFL210-31 | UCP201-8 | UCP305-16 |
| UCF217-52 | UCFC206-17 | UCFC215-47 | UCFL211-32 | UCP202-9 | UCP306-18 |
| UCF218-56 | UCFC206-18 | UCFC215-48 | UCFL211-34 | UCP202-10 | UCP307-20 |
| UCF305-14 | UCFC206-19 | UCFC216-49 | UCFL211-35 | UCP203-11 | UCP307-22 |
| UCF305-16 | UCFC206-20 | UCFC216-50 | UCFL212-36 | UCP204-12 | UCP308-24 |
| UCF306-18 | UCFC207-20 | UCFC216-51 | UCFL212-38 | UCP205-14 | UCP309-26 |
| UCF307-20 | UCFC207-21 | UCFC217-52 | UCFL212-39 | UCP205-15 | UCP309-28 |
| UCF307-22 | UCFC207-22 | UCFC217-53 | UCFL213-40 | UCP205-16 | UCP310-30 |
| UCF308-24 | UCFC207-23 | UCFC217-54 | UCFL214-44 | UCP206-17 | UCP311-32 |

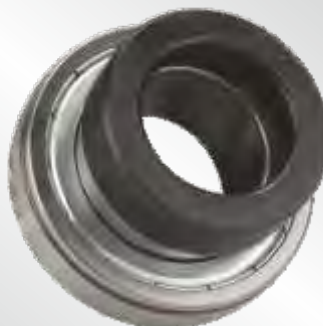
KG[®] Ball Bearings Units - Pillow Block (Inch Series)



| | | | |
|------------|------------|-----------|-----------|
| UCP311-34 | UCPA209-27 | UCT210-30 | UCT318-56 |
| UCP312-36 | UCPA209-28 | UCT210-31 | UCT319-60 |
| UCP312-38 | UCPA210-29 | UCT211-32 | UCT320-64 |
| UCP313-40 | UCPA210-30 | UCT211-34 | |
| UCP314-44 | UCPA210-31 | UCT211-35 | |
| UCP315-48 | UCPA210-32 | UCT212-36 | |
| UCP316-50 | UCPA211-32 | UCT212-38 | |
| UCP317-52 | UCPA211-33 | UCT212-39 | |
| UCP318-56 | UCPA211-34 | UCT213-40 | |
| UCP319-60 | UCPA211-35 | UCT214-44 | |
| UCP320-64 | UCPA212-36 | UCT215-48 | |
| UCPA201-8 | UCPA212-37 | UCT216-50 | |
| UCPA202-10 | UCPA212-38 | UCT217-52 | |
| UCPA202-9 | UCPA212-39 | UCT305-14 | |
| UCPA203-11 | UCT203-11 | UCT305-16 | |
| UCPA204-12 | UCT204-12 | UCT306-18 | |
| UCPA205-13 | UCT205-14 | UCT307-20 | |
| UCPA205-14 | UCT205-15 | UCT307-22 | |
| UCPA205-15 | UCT205-16 | UCT308-24 | |
| UCPA205-16 | UCT206-17 | UCT309-26 | |
| UCPA206-17 | UCT206-18 | UCT309-28 | |
| UCPA206-18 | UCT206-19 | UCT310-30 | |
| UCPA206-19 | UCT207-20 | UCT311-32 | |
| UCPA206-20 | UCT207-21 | UCT311-34 | |
| UCPA207-20 | UCT207-22 | UCT312-36 | |
| UCPA207-21 | UCT207-23 | UCT312-38 | |
| UCPA207-22 | UCT208-24 | UCT313-40 | |
| UCPA207-23 | UCT208-25 | UCT314-44 | |
| UCPA208-24 | UCT209-26 | UCT315-48 | |
| UCPA208-25 | UCT209-27 | UCT316-50 | |
| UCPA209-26 | UCT209-28 | UCT317-52 | |

Note:
KG can also offer housings with stainless steel bearings.

KG[®] Ball Bearings Units - Insert Ball Bearing (Metric Series)



| | | |
|--------|-------|--------|
| AEL201 | SB208 | UC314 |
| AEL202 | SB209 | UC315 |
| AEL203 | SB210 | UC316 |
| AEL204 | SB211 | UC317 |
| AEL205 | SB212 | UC318 |
| AEL206 | UC201 | UC319 |
| AEL207 | UC202 | UC511 |
| AEL208 | UC203 | UK205 |
| AEL209 | UC204 | UK206 |
| AEL210 | UC205 | UK207 |
| AEL211 | UC206 | UK208 |
| AEL212 | UC207 | UK209 |
| NA204 | UC208 | UK210 |
| NA205 | UC209 | UK211 |
| NA206 | UC210 | UK212 |
| NA207 | UC211 | UK213 |
| NA208 | UC212 | UK215 |
| NA209 | UC213 | UK216 |
| NA210 | UC214 | UK217 |
| NA211 | UC215 | UK218Q |
| NA212 | UC216 | |
| SA204 | UC217 | |
| SA205 | UC218 | |
| SA206 | UC305 | |
| SA207 | UC306 | |
| SA208 | UC307 | |
| SA211 | UC308 | |
| SA212 | UC309 | |
| SB204 | UC310 | |
| SB205 | UC311 | |
| SB206 | UC312 | |
| SB207 | UC313 | |

Note:
KG can also offer Insert
Ball Bearings in
stainless steel.

KG[®] Ball Bearings Units - Insert Ball Bearing (Inch Series)



| | | | | |
|-----------|-----------|----------|----------|----------|
| AEL201-8 | AEL212-38 | UC211-32 | UC307-21 | UC317-53 |
| AEL203-11 | AEL212-39 | UC211-33 | UC307-22 | UC317-55 |
| AEL204-12 | NA207-20 | UC211-34 | UC307-23 | UC318-55 |
| AEL205-13 | SER207-20 | UC211-35 | UC308-24 | UC318-56 |
| AEL205-14 | SER209-28 | UC212-36 | UC308-25 | UC319-58 |
| AEL205-15 | SER211-34 | UC212-37 | UC309-26 | UC319-59 |
| AEL205-16 | UC201-8 | UC212-38 | UC309-27 | UC319-60 |
| AEL206-17 | UC202-9 | UC212-39 | UC309-28 | |
| AEL206-18 | UC202-10 | UC213-40 | UC310-29 | |
| AEL206-19 | UC203-11 | UC213-41 | UC310-30 | |
| AEL206-20 | UC204-12 | UC214-42 | UC310-31 | |
| AEL207-20 | UC205-13 | UC214-43 | UC311-32 | |
| AEL207-21 | UC205-14 | UC214-44 | UC311-33 | |
| AEL207-22 | UC205-15 | UC215-45 | UC311-34 | |
| AEL207-23 | UC205-16 | UC215-46 | UC311-35 | |
| AEL208-24 | UC206-17 | UC215-47 | UC312-36 | |
| AEL208-25 | UC206-18 | UC215-48 | UC312-37 | |
| AEL209-10 | UC206-19 | UC216-49 | UC312-38 | |
| AEL209-26 | UC206-20 | UC216-50 | UC312-39 | |
| AEL209-27 | UC207-20 | UC216-51 | UC313-40 | |
| AEL209-28 | UC207-21 | UC217-52 | UC313-41 | |
| AEL209-9 | UC207-22 | UC217-53 | UC314-42 | |
| AEL210-29 | UC207-23 | UC217-55 | UC314-43 | |
| AEL210-30 | UC208-24 | UC218-56 | UC314-44 | |
| AEL210-31 | UC208-25 | UC305-13 | UC315-45 | |
| AEL210-32 | UC209-26 | UC305-14 | UC315-46 | |
| AEL211-32 | UC209-27 | UC305-15 | UC315-47 | |
| AEL211-33 | UC209-28 | UC305-16 | UC315-48 | |
| AEL211-34 | UC210-29 | UC306-17 | UC316-49 | |
| AEL211-35 | UC210-30 | UC306-18 | UC316-50 | |
| AEL212-36 | UC210-31 | UC306-19 | UC316-51 | |
| AEL212-37 | UC210-32 | UC307-20 | UC317-52 | |

Note:
KG can also offer
Insert Ball
Bearings in
stainless steel.

KG[®] Plummer Block Housings



| | | |
|-------|--------|--------|
| SN205 | SN517 | SNU507 |
| SN206 | SN518 | SNU508 |
| SN207 | SN519 | SNU509 |
| SN208 | SN520 | SNU510 |
| SN209 | SN522 | SNU511 |
| SN210 | SN524 | SNU512 |
| SN211 | SN526 | SNU513 |
| SN212 | SN528 | SNU515 |
| SN213 | SN530 | SNU516 |
| SN214 | SN532 | SNU517 |
| SN215 | SN605 | SNU518 |
| SN216 | SN606 | SNU520 |
| SN217 | SN607 | SNU522 |
| SN218 | SN608 | SNU524 |
| SN219 | SN609 | |
| SN220 | SN610 | |
| SN222 | SN611 | |
| SN224 | SN612 | |
| SN226 | SN613 | |
| SN228 | SN615 | |
| SN230 | SN616 | |
| SN505 | SN617 | |
| SN506 | SN618 | |
| SN507 | SN619 | |
| SN508 | SN620 | |
| SN509 | SN622 | |
| SN510 | SN624 | |
| SN511 | SN626 | |
| SN512 | SN628 | |
| SN513 | SN630 | |
| SN515 | SNU505 | |
| SN516 | SNU506 | |

Note:
SNU series can be produced as SNL series depending upon size and requirements.

KG[®] Adapter Sleeve Assemblies

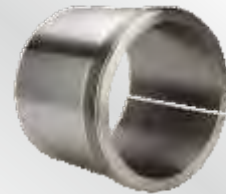


Metric Series

Inch Series

| | | | | |
|-------|-------|-------|----------|-------|
| H204 | H2316 | H306 | H3168 | HE206 |
| H205 | H2317 | H3060 | H317 | HE207 |
| H206 | H2318 | H3064 | H3172 | HE208 |
| H207 | H2319 | H3068 | H3176 | HE209 |
| H208 | H2320 | H307 | H318 | HE210 |
| H209 | H2321 | H3072 | H3180 | HE211 |
| H210 | H2322 | H3074 | H3184 | HE212 |
| H211 | H2324 | H308 | H3188 | HE213 |
| H212 | H2326 | H3080 | H319 | HE215 |
| H213 | H2328 | H309 | H3192 | HE216 |
| H214 | H2330 | H310 | HOH3036H | HE217 |
| H215 | H2332 | H311 | HOH3048H | HE306 |
| H216 | H2334 | H312 | HOH3052H | HE307 |
| H217 | H2336 | H3120 | HOH3060H | HE308 |
| H218 | H2338 | H3122 | HOH3156H | HE309 |
| H219 | H2340 | H3124 | | HE310 |
| H220 | H2344 | H3126 | | HE311 |
| H221 | H2348 | H3132 | | HE312 |
| H222 | H2352 | H3134 | | HE313 |
| H2304 | H2356 | H3136 | | HE314 |
| H2305 | H3024 | H3138 | | HE315 |
| H2306 | H3026 | H314 | | HE316 |
| H2307 | H3028 | H3140 | | HE317 |
| H2308 | H3038 | H3144 | | |
| H2309 | H304 | H3148 | | |
| H2310 | H3040 | H315 | | |
| H2311 | H3044 | H3152 | | |
| H2312 | H3048 | H3156 | | |
| H2313 | H305 | H316 | | |
| H2314 | H3052 | H3160 | | |
| H2315 | H3056 | H3164 | | |

KG[®] Adapter Sleeve Assemblies



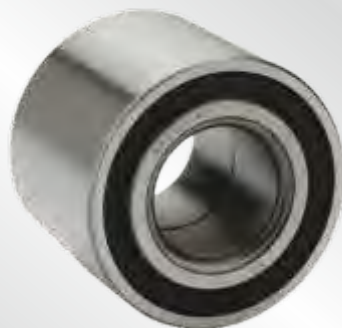
Nut Lock

Washer

Withdrawal Sleeve

| | | | | |
|------|------|------|---------|----------|
| KM05 | MB02 | MB31 | AH2332 | AHX2348 |
| KM07 | MB03 | MB32 | AH2334 | AHX24048 |
| KM08 | MB04 | MB33 | AH2336 | AHX24060 |
| KM10 | MB05 | MB34 | AH2338 | AHX3030 |
| KM11 | MB06 | MB36 | AH2348 | AHX317 |
| KM12 | MB07 | MB38 | AH3038 | AHX318 |
| KM13 | MB08 | MB40 | AH3040 | AHX320 |
| KM14 | MB09 | MB44 | AH315 | AHX3222 |
| KM15 | MB10 | | AH317 | AHX3224 |
| KM16 | MB11 | | AH3222 | AHX3226 |
| KM17 | MB12 | | AH3234 | AHX3228 |
| KM18 | MB13 | | AHX2311 | AHX3234 |
| KM19 | MB14 | | AHX2312 | |
| KM20 | MB15 | | AHX2314 | |
| KM21 | MB16 | | AHX2316 | |
| KM22 | MB17 | | AHX2318 | |
| KM24 | MB18 | | AHX2322 | |
| KM25 | MB19 | | AHX2324 | |
| KM26 | MB20 | | AHX2328 | |
| KM27 | MB21 | | AHX2332 | |
| KM28 | MB22 | | AHX2334 | |
| KM29 | MB23 | | AHX2336 | |
| KM30 | MB24 | | AHX2338 | |
| KM31 | MB25 | | AHX311 | |
| KM32 | MB26 | | AHX312 | |
| KM34 | MB27 | | AHX3122 | |
| KM36 | MB28 | | AHX3224 | |
| KM38 | MB29 | | AHX3228 | |
| KM40 | MB30 | | AHX3234 | |

KG[®] Automotive Wheel Bearings



| | | | | |
|------------------|----------------|----------------|----------------|---------------|
| WB2552-37 | WB357204-33 | WB39(41)75-37 | WB4084-3975 | WB4380-38 |
| WB2552-42 | WB357204-34 | WB396806-37 | WB4090-28-23 | WB4380-40 |
| WB2552-43 | WB3572-26 | WB396807-37 | WB4094-31-26 | WB4380-50-45 |
| WB2555-43 | WB3572-33 | WB3968-37 | WB4168-40-35 | WB4382-45 |
| WB2555-45 | WB3572-33-31 | WB397206-37 | WB4272-38 | WB44825.37 |
| WB2555-48 | WB3572-334 | WB3972-37 | WB4275-37 | WB4580-45 |
| WB2562-48 | WB3572-34 | WB3974-34 | WB4276-38-35 | WB4584-39 |
| WB2752-43-45 | WB3574-45 | WB3974-39 | WB4276-39 | WB4584-41-39 |
| WB2752-45-43(WR) | WB3575-25-48 | WB40108-32-17 | WB4276-40-37 | WB4584-42-40 |
| WB2760-50 | WB3576-54 | WB407206-37 | WB427805-41-38 | WB4585-23 |
| WB2858-42 | WB3580-28-21 | WB4072-36 | WB4278-38-41 | WB4585-302 |
| WB2858-44 | WB3668-33 | WB4072-36-33 | WB4278-40 | WB4585-41 |
| WB2861-42 | WB3672-33-28 | WB4072-37 | WB4278-41-38 | WB4587-41-39 |
| WB2953-37 | WB3672-34 | WB4074-36 | WB4278-45 | WB4587-39 |
| WB3060-37 | WB3676-29-27 | WB4074-36-34 | WB428003-42 | WB4788-55 |
| WB3063-42 | WB377202-37 | WB4074-40 | WB4280-36 | WB4886-42-40 |
| WB3065-21 | WB377204-37 | WB4074-42 | WB4280-36-34 | WB4889-42 |
| WB327203-45 | WB3772-33 | WB4074-42-ZZ | WB4280-37 | WB4889-44-42 |
| WB3462-37 | WB3772-37 | WB4075-50 | WB4280-38 | WB4984-43(WR) |
| WB3464-37 | WB3772-437 | WB407604-41-38 | WB4280-42 | WB4984-48 |
| WB3466-37 | WB3870-37 | WB4076-33 | WB4280-45 | WB4988-46 |
| WB3562-40 | WB3870-38 | WB4076-33-28 | WB4282-36 | WB5090-34 |
| WB3562-42 | WB3871-33-30 | WB4076-41-38 | WB4282-37 | WB5090-35 |
| WB3564-37 | WB3871-39 | WB4080-28 | WB428402-36 | |
| WB3566-32 | WB387202-36-33 | WB4080-31 | WB4284-34 | |
| WB3566-33 | WB3872-34 | WB4080-302 | WB4284-36 | |
| WB3566-37 | WB3872-36-33 | WB4080-36-34 | WB4284-39 | |
| WB3565-35-Z | WB3872-40 | WB4080-40 | WB43(45)82-37 | |
| WB3568-33-30 | WB3873-40 | WB4080-43 | WB43-4582-37 | |
| WB3568-37 | WB387404-50 | WB408202-538 | WB4376-43 | |
| WB357202-28 | WB3874-36-33 | WB4082-40 | WB4379-45 | |
| WB357202-28 | WB3874-50 | WB4084-38 | WB4379-41-38 | |

KG[®] Automotive Clutch Bearings & Steering Bearings



Clutch Bearings

Steering Bearings

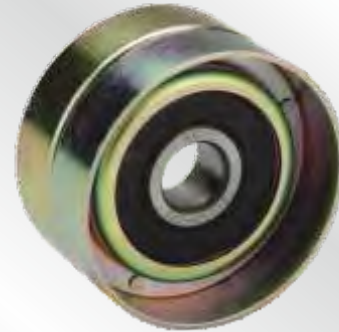
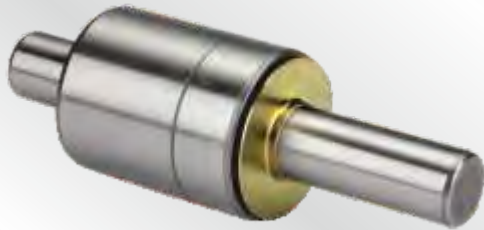
| | | | |
|---------------|--------------|---------------|----------|
| CB283556-28 | CB353765-345 | CB52493-20 | STB35105 |
| CRB2825-32 | CB353765-406 | CB5292-262 | STB3511 |
| CB2856-325 | CB354233 | CB5588-196 | STB3811 |
| CB285728 | CB3550-38 | CB6090-23 | STB4011 |
| CB29259-353 | CB35565-14 | CB651018-225 | STB41115 |
| CB30147-245 | CB3557-13 | CB698120-295 | STB4112 |
| CB3053-17 | CB35714-48 | CB698120-295 | STB4713 |
| CB30368-255 | CB3572-41 | CB70117-27 | STB5215 |
| CB31153-23 | CB3774-41 | CRB31168-23 | STB52153 |
| CB3155-351 | CB38168-375 | CRB317754-344 | |
| CB31870-335 | CB381673-165 | CRB35179-25 | |
| CB31870-34 | CB38668-316 | CRB3568-30 | |
| CB32140-50 | CB386712 | CRB3572-33 | |
| CB32157-17 | CB3868-34 | CRB5427-77 | |
| CB33154-23 | CB3868-344 | | |
| CB3316275-236 | CB3868-375 | | |
| CB331653-31 | CB3868-485 | | |
| CB331678-32 | CB3868-585 | | |
| CB33168-235 | CB3868-63 | | |
| CB33269-273 | CB40636-14 | | |
| CB33366-24 | CB40636-16 | | |
| CB3366-31 | CB4067-20 | | |
| CB3366-70 | CB4070-20 | | |
| CB3370-31 | CB407519 | | |
| CB33708-328 | CB40826-273 | | |
| CB3377-395 | CB43666-207 | | |
| CB339634 | CB45736-18 | | |
| CB35158-265 | CB4576623 | | |
| CB351696-31 | CB47778-245 | | |
| CB35250-408 | CB5082-21 | | |



AC Bearings

Alternator Bearings

| | | |
|---------------|------------|------------|
| ACB3047-12 | ACB4068-30 | ALB0823-14 |
| ACB3047-18 | | ALB1027-11 |
| ACB3047-20 | | ALB1242-10 |
| ACB3047-22 | | ALB1532-11 |
| ACB3050-20 | | ALB1535-13 |
| ACB3052-22 | | ALB1538-19 |
| ACB3055-23 | | ALB1540-14 |
| ACB3062-27 | | ALB1543-13 |
| ACB3247-18 | | ALB1546-14 |
| ACB3252-18-20 | | ALB1547-14 |
| ACB3255-23 | | ALB1552-16 |
| ACB3257-18 | | ALB1752-16 |
| ACB3548-20 | | ALB1752-17 |
| ACB3550-20 | | |
| ACB3552-12 | | |
| ACB3552-20 | | |
| ACB3552-22 | | |
| ACB3552-23 | | |
| ACB3555-20 | | |
| ACB3555-24 | | |
| ACB3562-21 | | |
| ACB3854-17 | | |
| ACB4055-24 | | |
| ACB4057-24 | | |
| ACB4057-24 | | |
| AACB4062-206 | | |
| ACB4062-20625 | | |
| ACB4062-24 | | |
| ACB4062-24 | | |
| ACB4066-24 | | |

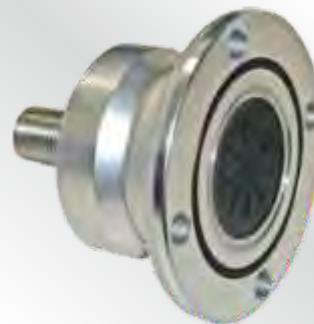


Water Pump Bearings

Tensioner Bearings

| | | |
|-------------------------|----------------|----------------|
| K105 | WPBR1342-116 | 830900AE |
| WPBB1226-1035 | WPBR160555-127 | JPU58-015A-3 |
| WPBB1230106D | WPBR1630139 | JPU60-71+JF129 |
| WPBB1230-116(15918) | WPBR1655-127 | TB10285-40 |
| WPBB1230-128 | | TB1060-28 |
| WPBB1230-128(S) | | TB1250-272 |
| WPBB1240-111 | | TB12576-29 |
| WPBB1267530-1025(15918) | | TB1262-286 |
| WPBB1335-11875 | | TB22550-42 |
| WPBB13381-112 | | TB2860-375 |
| WPBB159183016 | | TB294575-39 |
| WPBB1591830-12779 | | TB294575-39R |
| WPBB1591830-1381 | | TB3062-46 |
| WPBB1591830-1619 | | TB52-315 |
| WPBB1591838114 | | TB53-435 |
| WPBB15918381119 | | TB576994-3375 |
| WPBB15918381-1529 | | TB60-35 |
| WPBB1591855-12 | | TB760-425 |
| WPBB1591855-127 | | TB8560-195 |
| WPBB1593930127 | | TR60-44 |
| WPBB1593930-1278(S) | | |
| WPBB1652-150 | | |
| WPBB1630082-1 | | |
| WPBB2047-143 | | |
| WPBR1242-119(16) | | |
| WPBR1242-119(19) | | |
| WPBR1242-119(22) | | |
| WPBR1235-110 | | |
| WPBR1235-114 | | |
| WPBR1340-119 | | |

KG[®] Automotive Hub Bearings & Agri-Hub Bearings



Hub Bearings

Agri-Hub Bearings

| | | | KG Agri-Hub Part No. | Equivalent To |
|----------------|----------------------|---------------------|----------------------|---------------|
| HUB065-11 | 2HUB3098-613 | 3HUB55739-136 | | |
| HUB2584-618 | 2HUB3099-42 | 3HUB565100-79 | | |
| HUB301143-675 | 2HUB3099-42 A | 3HUB568100-374 | AH0001 | BAA0001 |
| HUB30118-685 | 2HUB30999-42 | 3HUB57100-4218 | AH0002 | BAA0002 |
| HUB3271-629 | 2HUB311143-61 | 3HUB57100-44 | AH0003 | BAA0003 |
| HUB39120-628 | 2HUB331143-712 | 3HUB57100-444 | AH0004 | BAA0004 |
| HUB43102-44 | 2HUB331143-79 | 3HUB57112-70 | AH0005 | BAA0005 |
| 2HUB25100-734 | 2HUB34107-70 | 3HUB601143-72 | AH0006 | BAA0006 |
| 2HUB25108-734 | 2HUB341143-645 | 3HUB65108-37 | AH0012 | BAA0012 |
| 2HUB27134-675 | 2HUB34595-655 | 3HUB65108-37 A | AH0013 | BAA0013 |
| 2HUB271143-73 | 2HUB35108-695 | 3HUB65108-43 | | |
| 2HUB27148-825 | 2HUB35110-74 | 3HUB65108-43 A | | |
| 2HUB28100-71 | 2HUB361143-71 | 3HUB7014115-42 | | |
| 2HUB281143-645 | 2HUB37120-64 | 3HUB701412065478 | | |
| 2HUB281143-705 | 2HUB37120-64 A | 3HUB701412065-4728A | | |
| 2HUB281255-90 | 2HUB37120-64 B | 3HUB701412065-4728B | | |
| 2HUB28134-495 | 2HUB381143-77 | 3HUB7131143-375 | | |
| 2HUB28134-867 | 2HUB40106-43 | 3HUB71431143-542 | | |
| 2HUB28662-52 | 2HUB43120-66 | 3HUB74120-513D | | |
| 2HUB2897-42 | 2HUB45105-475 | ACF026-1AS | | |
| 2HUB30100-595 | 2HUB54101-59(TR) | 3DACF026-7AS | | |
| 2HUB30100-66 | 2HUB54101-59(TR)-KIT | 3DACF041D-3 | | |
| 2HUB30100-66 A | 2HUB5187-55(TR) | | | |
| 2HUB30100-705 | 3HUB25128-42 | | | |
| 2HUB30100-79 | 3HUB27134-525 | | | |
| 2HUB30108-713 | 3HUB28134-495 | | | |
| 2HUB301143-675 | 3HUB30120-545 | | | |
| 2HUB301143-705 | 3HUB301365-48 | | | |
| 2HUB30148-778 | 3HUB32129-42 | | | |
| 2HUB30152-865 | 3HUB32129-42(WG) | | | |
| 2HUB3090-50 | 3HUB515137-84 | | | |



Rod Ends

Linear Motion Bearings

UV Joints

| | | | | | |
|--------|--------|---------|----------------|---------------|---------------|
| PHS10 | POS8L | LM10UU | GU3500 | UVJ24X74.6 | UVJ50X152.6 |
| PHS10L | POS10 | LM12UU | GU7300 | UVJ25X76.8 | UVJ52.05X133 |
| PHS12 | POS10L | LM13UU | UVJA22X55(S) | UVJ27X61.5 | UVJ57X152 |
| PHS12L | POS12 | LM14UU | UVJA2384X612 | UVJ27X74.6 | UVJ59X167.5 |
| PHS14 | POS12L | LM16UU | UVJA27X70(S) | UVJ27X81.7 | UVJ5-7105X |
| PHS14L | POS14 | LM18UU | UVJA27X75(S) | UVJ27X92 | UVJ49.2X191.6 |
| PHS16 | POS14L | LM20UU | UVJA27X817 | UVJ29X49 | |
| PHS16L | POS16 | LM25UU | UVJA29X80(S) | UVJ29X77 | |
| PHS18 | POS16L | LM30UU | UVJA302X1065 | UVJ30.2X81.7 | |
| PHS18L | POS18 | LM35UU | UVJA302X80(S) | UVJ30.2X82 | |
| PHS20 | POS18L | LM40UU | UVJA302X92(S) | UVJ30X84 | |
| PHS20L | POS20 | LM45UU | UVJA30X75(S) | UVJ30.18X92 | |
| PHS22 | POS20L | LM50UU | UVJA30X91 | UVJ32X76 | |
| PHS22L | POS22 | LM60UU | UVJA32X76(S) | UVJ33.3X79PR | |
| PHS25 | POS22L | LM8UU | UVJA35X1065(S) | UVJ6S6902 | |
| PHS25L | POS25 | LME10UU | UVJA35X98(S) | UVJ5-2117X | |
| PHS28 | POS25L | LME12UU | UVJB30X85(S) | UVJ8-97080897 | |
| PHS28L | POS28 | LME13UU | UVJB34X90(S) | UVJ30.18X106 | |
| PHS30 | POS28L | LME14UU | UVJ15/16X38 | UVJ36.5X108PR | |
| PHS30L | POS30 | LME16UU | UVJ15X38 | UVJ36.5X90PR | |
| PHS5 | POS30L | LME18UU | UVJ15X39 | UVJ38 X57.2 | |
| PHS5L | | LME20UU | UVJ15X40 | UVJ39.69X115 | |
| PHS6 | | LME25UU | UVJ16X38 | UVJ39X115.85 | |
| PHS6L | | LME30UU | UVJ16X39 | UVJ42.88X115P | |
| PHS8 | | LME35UU | UVJ16X40 | UVJ42.88X140P | |
| PHS8L | | LME40UU | UVJ19X48 | UVJ35X126 | |
| POS5 | | LME45UU | UVJ20X54.6 | UVJ45X126 | |
| POS5L | | LME50UU | UVJ22X54 | UVJ47.62X134 | |
| POS6 | | LME60UU | UVJ23.82X61.3 | UVJ48X126 | |
| POS6L | | LME8UU | UVJ24X63 | UVJ49.25X154 | |
| POS8 | | | UVJ24X63.5 | UVJ49.2X148PR | |



| | | | | | |
|----------------|-------------|-----------------|-------------|--------------|------------|
| 50SCRN31P | 27709 | 532805 | AB2016 | JC 8002 | T4CB100P6X |
| 50SCRN31P-4B | 285216 | 534565 | AC10059 | JC 8003 | T88W |
| 50SCRN37P-12-P | 28TAG12 | 543562 | B10-50D 2RS | K6205-2RS | U298/U261L |
| 68SCRN48P-1 | 2RNU0619 | 581079 A | B-14 | K6206-2RS | U399/U360L |
| 68SCRN58P-5 | 2WCN20 | 581079 C | B-16 | K6207 2RS | U399/U365L |
| 68SCRN62P | 305283DPQ | 6304NR | B19Z-16 | K6208 | U497/U460L |
| FCR50-10-1/2 | 306891PQ | 639174 | B32-10C5 | KG38KW01 CG5 | W208 PP8 |
| FCR50-10-1/2E | 30BCDS2 | 639175 | B8-80CG120 | P2040 | W210 PP2 |
| FCR50-17-8/2E | 30BCDS3 | 639213 | BAA004 | P2047-01 | W6B102A |
| FCR55-17-11/2 | 313891APQ | 65210 | BBMR3848BG1 | PX0985 | |
| 102605M | 31RUKSNRC3 | 688808K | BBYB362744 | PX0985 PB | |
| 127509 | 32228APQ | 688811AK1C23 | BT25-4 | RNU0727 | |
| 1580205 | 32213UX1 | 688911AK1C23 | C014 | SC204 | |
| 1580206 | 35BCD08-2LR | 7805/28 | C015B | SC205 | |
| 1580207 | 37425/37625 | 78TKC5401 | C06 | SC206 | |
| 1580208 | 38KTT | 7909 AA | CB3557-13 | SC207 | |
| 1580209 | 39KTT | 800792 C | CB4067-20 | SC208 | |
| 1580211 | 403635 | 804358 | CBU442822H | SC209S | |
| 1680204 | 40KW01 | 807813A | CR-1252 | C210 | |
| 1680205 | 411280 | 801346-22/10-22 | CSK12PP | SF4826PX1 | |
| 1680206 | 414292 | 830900AE | CSK15PP | SF5620PX1 | |
| 1680207 | 500636 | 88506 | CSK17PP | SL-11 | |
| 1680208 | 509043A | 88507 | CSK20PP | SL-13 | |
| 1680209 | 509043 P | 88508 | CSK25 | T119 | |
| 1680210 | 50KW01 | 88509 | CSK30 | T126 | |
| 1680211 | 511482 | 88510 | CSK35PP | T138 | |
| 19341 | 512533 | 88512 | CSK40PP | T149 | |
| 202KTT | 525141M(WR) | 885141 | CSK8 | T163 | |
| 202KTT 2RS | 528983 B | 885158 | CT1310 | ST491A | |
| 24TK308B2U3 | 528946 | 98205 | CT1310 2RS | ST491-SQ30.5 | |
| 256907 | 532792 | 98305 | DL3520M/28 | ST491-SQ31.0 | |
| 2580/20 | 532796 | 986714 | DRT407232 | ST740 | |
| 26-899 | 532803 | AB12076 | EB 6210 WG | T199 | |

KG[®] Slewing Bearings & Slewing Drives



| | | |
|--------------|-----------------------|-------------|
| Q11.20.977F | BB5590310026 | SX011820VSP |
| 10000010501 | BBE2062402 | SX011824VSP |
| 20430003381 | BBE2071200 | SX011828VSP |
| 20430011765 | BBSE17D01030023 | VS050A03 |
| BB0000613401 | BBVE043AC8 | |
| BB0531693 | IFB.20.1094.200.1NTPO | |
| BB0783267001 | IG2.28.1215.200.1NRPO | |



KG International

MOVING TO
THE NEXT
50 YEARS
1968-2018

YOUR ENGINEERING SOLUTION PARTNER



KG International FZCO
P.O. Box 17122, Jebel Ali Free Zone, Dubai
United Arab Emirates
T: +971 4 8815547 | F: +971 4 8816423 / 8818509
www.kginternational.com

ISO CERTIFIED COMPANY
EUROPE | DUBAI | INDIA

